

# MICROMOTOR NF009G



Fleischmann BR 38 K, DRG 01.10, P8, BR 23, BR 011, BR 012

Glockenankermotor Umbau Spur N  
Coreless motor upgrade N gauge  
Klokankermotor ombouwset N

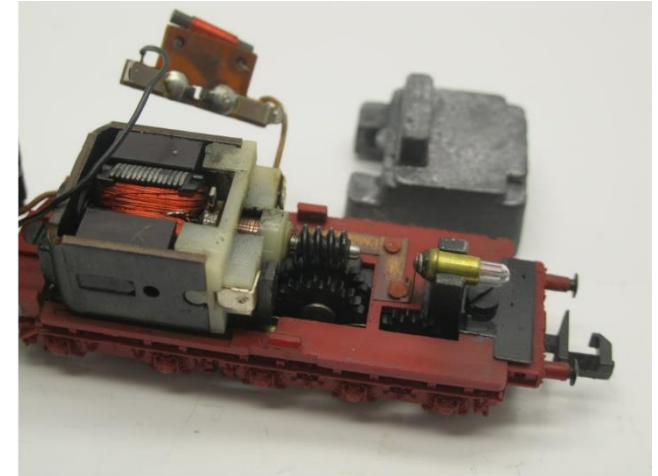
**Warning!** This product is not a toy and is not suitable for children under 14 years contains small parts. This product contains electronic parts so do not throw them in the household waste but hand them in separately. The EU WEEE directive applies.

**Achtung!** Dieses Produkt ist kein Spielzeug, nicht für Kinder unter 14 Jahren geeignet, enthält Kleinteile. Dieses Produkt enthält elektronische Teile. Werfen Sie diese daher nicht in den Müll, sondern getrennt einsammeln. Es gilt die EU-WEEE-Richtlinie.

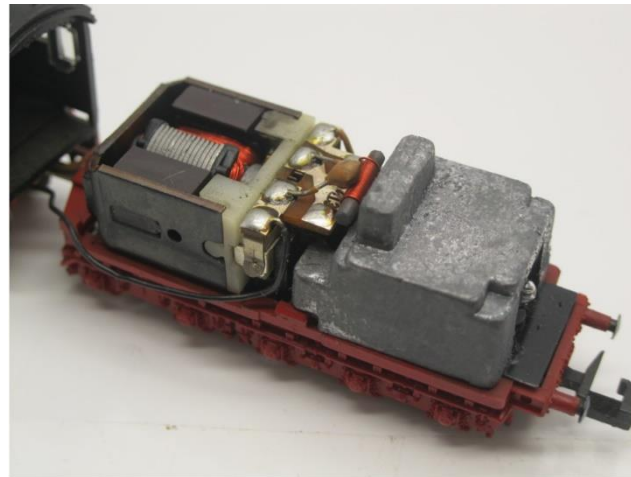
**Opgelet!** Dit product is geen speelgoed, niet geschikt voor kinderen onder de 14 jaar, bevat kleine onderdelen. Dit product bevat elektronische onderdelen, gooi dit daarom niet bij het huisafval maar lever dit apart in. WEEE-Regelgeving van de EU is van toepassing.



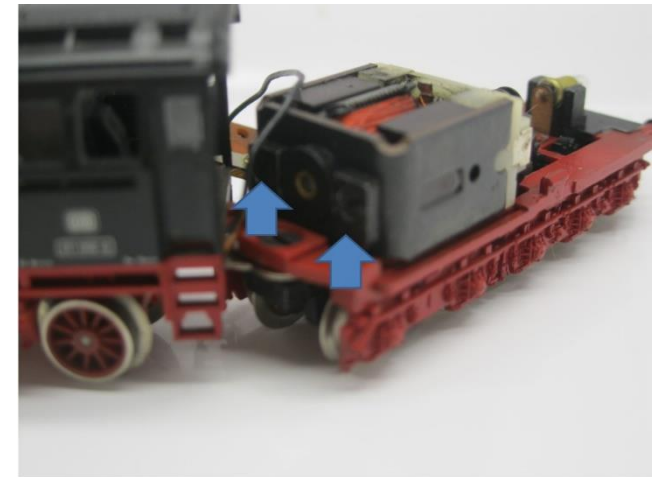
Öffnen Sie die Lokomotive  
Open the locomotive  
Open de locomotief



Ausbau alter Motor  
Take out the old motor  
Demonteer de oude motor

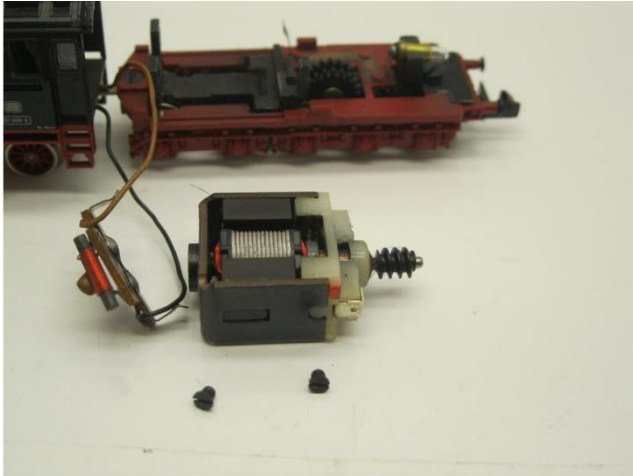


Ausbau alter Motor  
Take out the old motor  
Demonteer de oude motor



Ausbau alter Motor  
Take out the old motor  
Demonteer de oude motor

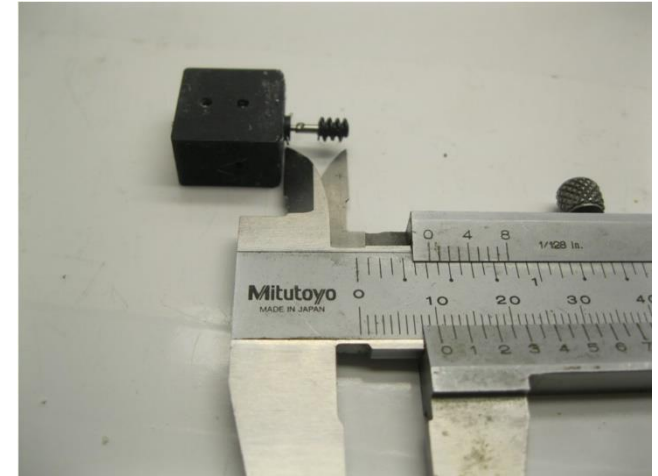




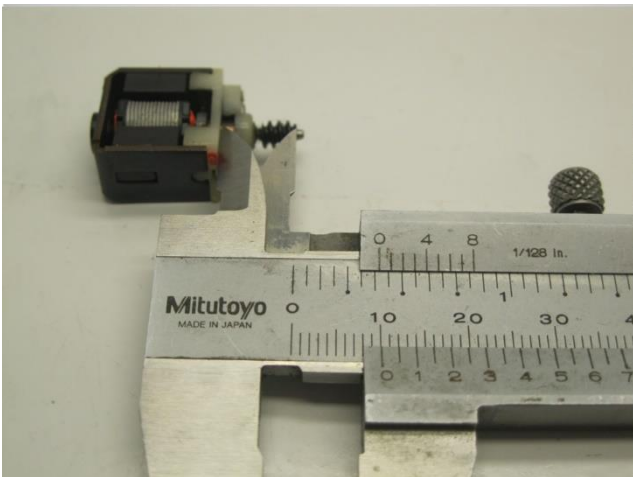
Ausbau alter Motor  
Take out the old motor  
Demonteer de oude motor



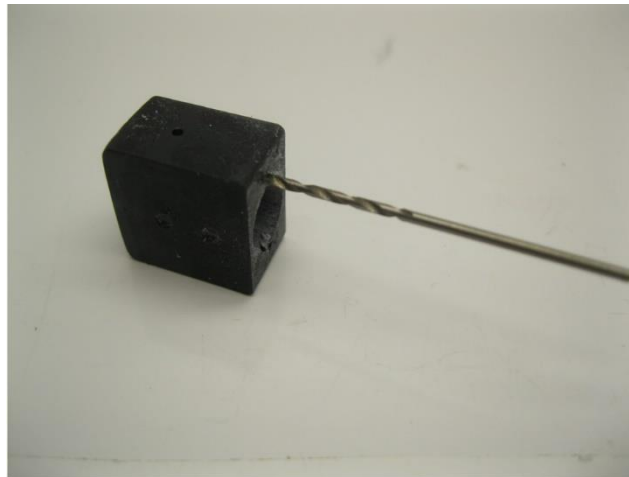
Die Teile des Bausatz (Schnecke nicht auf dieses Bild)  
The parts of the kit (Worm gear not on this picture)  
Onderdelen van de ombouwset (Wormwiel is niet afgebeeld)



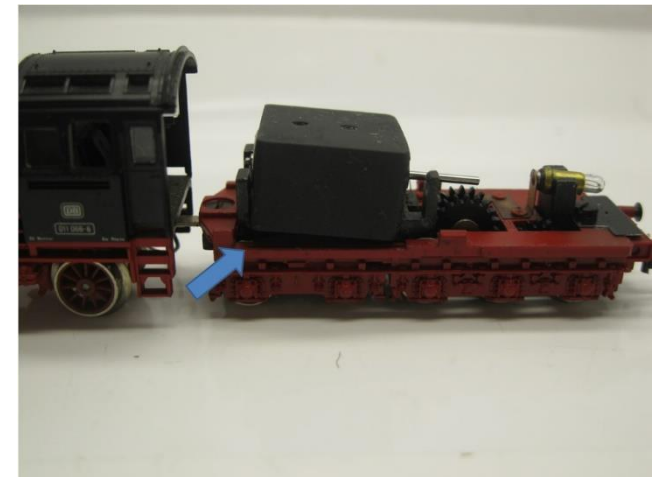
Passgenauigkeit prüfen  
Test fit  
Controleer de passing



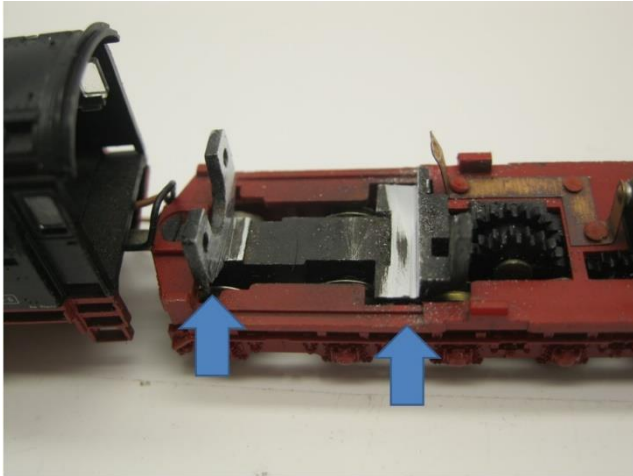
Maße prüfen  
Check dimensions  
Controleer de maatvoering



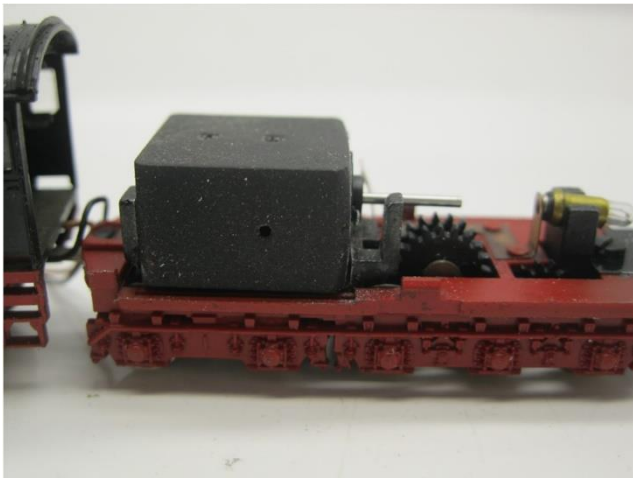
Vergrößern Sie die Löcher auf 1.3 mm  
Enlarge the holes to 1.3 mm  
Vergroot de gaten naar 1.3 mm



Passgenauigkeit prüfen  
Test fit  
Controleer de passing



Material muss gefräst werden  
Material must be milled  
Materiaal moet gefreesd worden



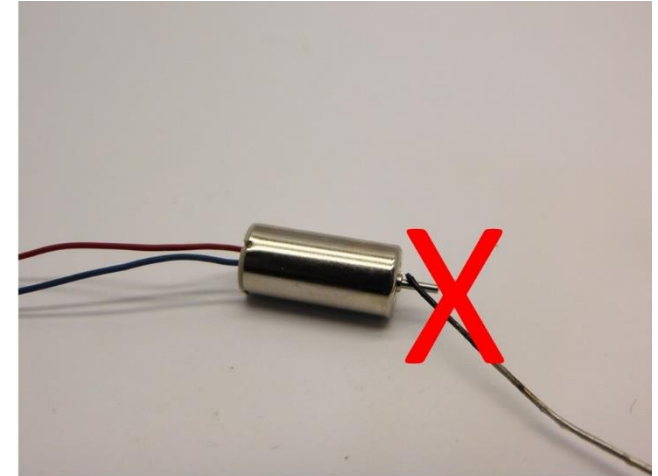
Passgenauigkeit prüfen  
Test fit  
Controleer de passing



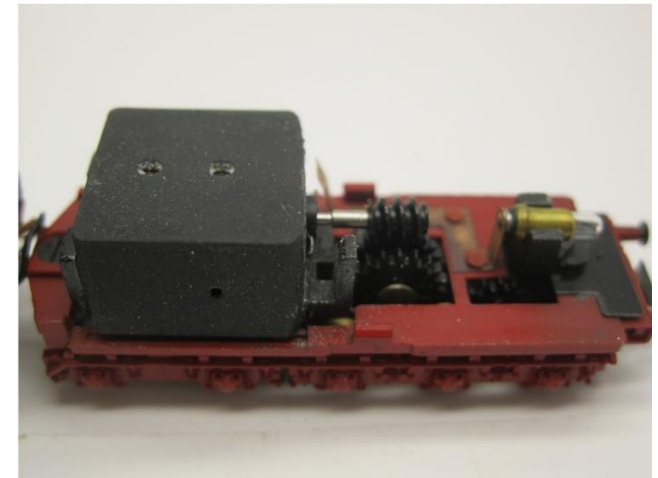
Metall Teile werden mit Loctite oder Metal Epoxy Kleber verklebt  
Metal parts are glued with Loctite or metal epoxy glue  
Metalen onderdelen worden gelijmd met loctite of epoxylijm voor metalen



Tragen Sie Klebstoff auf die Innenseite des Teile auf  
Apply glue on the inside of the part  
Plaats alleen lijm aan de binnenzijde van de onderdelen

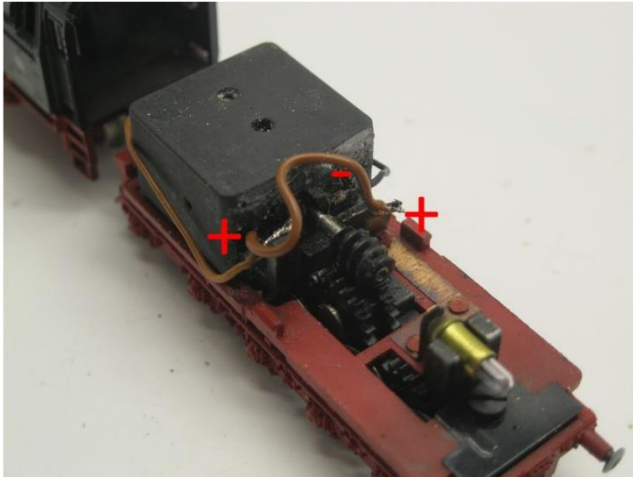


Tragen Sie keinen Kleber auf die Achse auf  
Don't apply glue on the axle  
Plaats geen lijm op de as

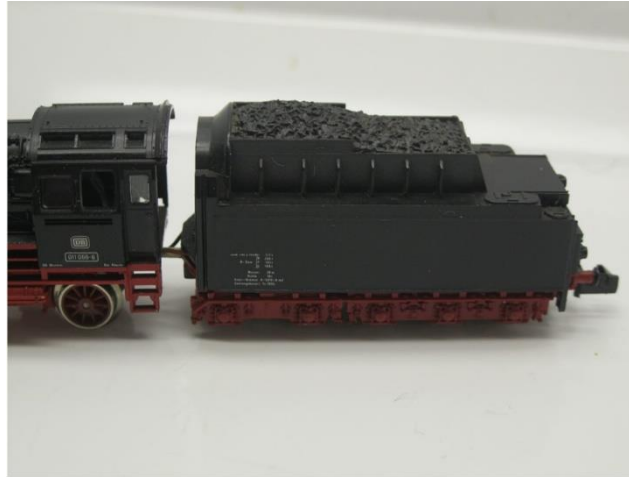


Motor platzieren  
Mount motor  
Plaats motor





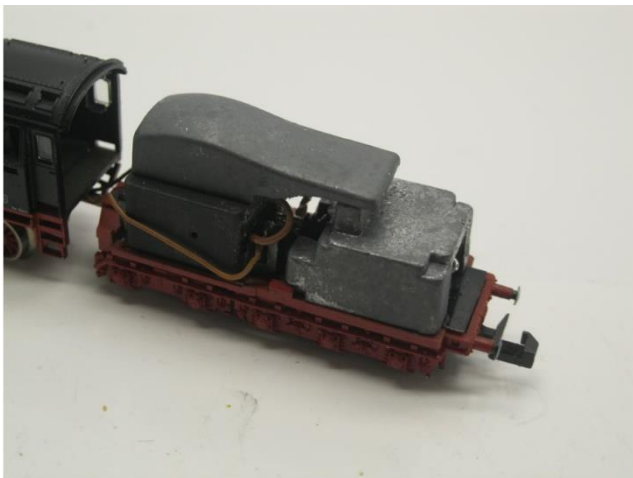
Drähte löten  
Solder the wires  
Soldeer de draden



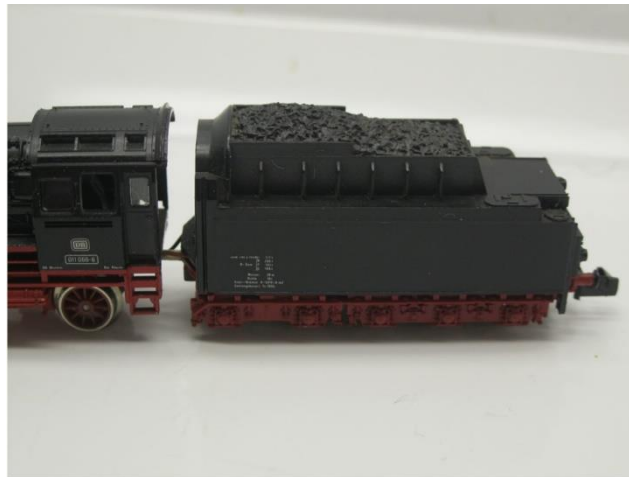
Gehäuse platzieren  
Mount body  
Plaats de kap



Micromotor NF009G



Gewichte platzieren  
Mount weights  
Plaats de gewichten



Umbau fertig  
Upgrade complete  
Ombouw gereed