

MICROMOTOR NA021G

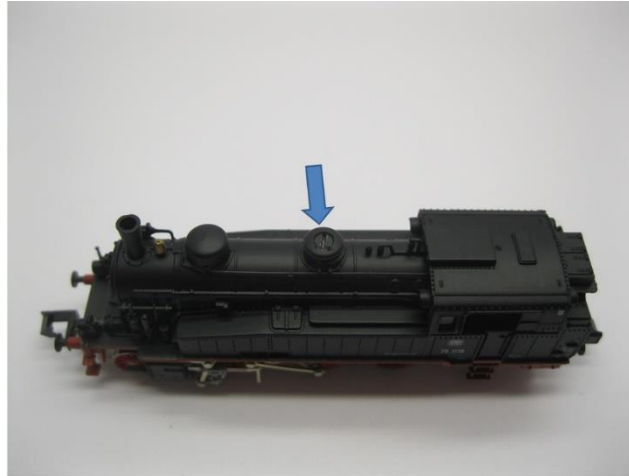


Arnold BR 75, Bad Vic, SNCF 131 TX, CFL BR 35
Glockenankermotor Umbau Spur N
Coreless motor upgrade N gauge
Klokankermotor ombouwsset N

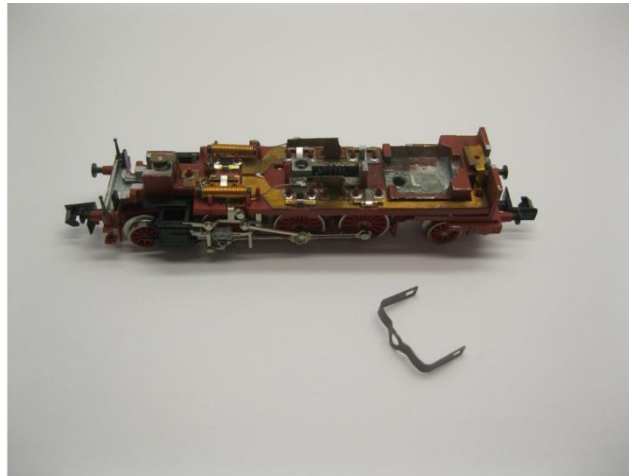
Warning! This product is not a toy and is not suitable for children under 14 years contains small parts. This product contains electronic parts so do not throw them in the household waste but hand them in separately. The EU WEEE directive applies.

Achtung! Dieses Produkt ist kein Spielzeug, nicht für Kinder unter 14 Jahren geeignet, enthält Kleinteile. Dieses Produkt enthält elektronische Teile. Werfen Sie diese daher nicht in den Müll, sondern getrennt einsammeln. Es gilt die EU-WEEE-Richtlinie.

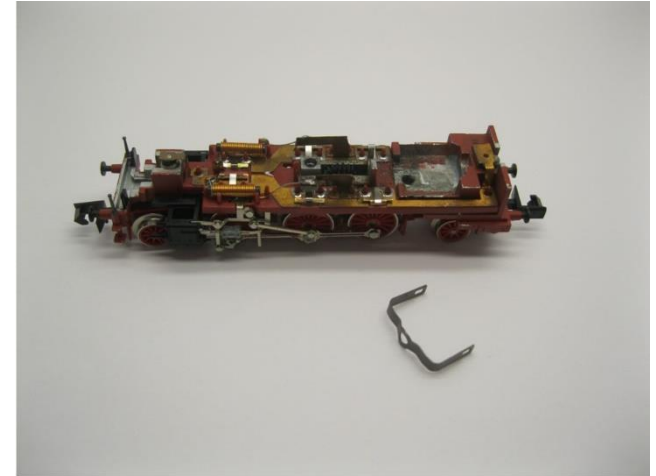
Opgelet! Dit product is geen speelgoed, niet geschikt voor kinderen onder de 14 jaar, bevat kleine onderdelen. Dit product bevat elektronische onderdelen, gooi dit daarom niet bij het huisafval maar lever dit apart in. WEEE-Regelgeving van de EU is van toepassing.



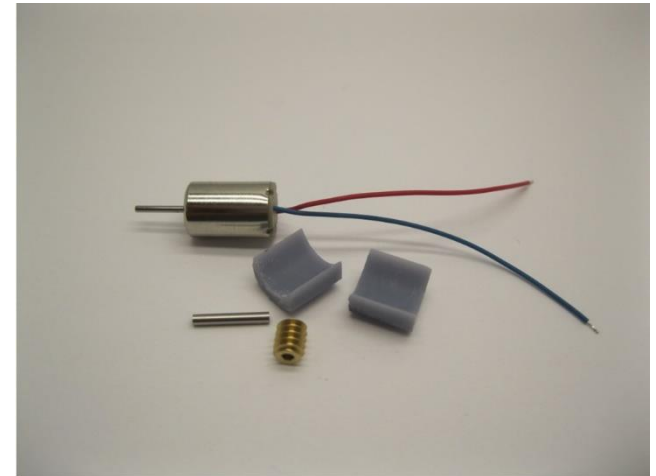
Öffnen Sie die Lokomotive
Open the locomotive
Open de locomotief



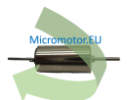
Öffnen Sie die Lokomotive
Open the locomotive
Open de locomotief



Die original Motor wurde entfernt, da er defekt war
The original motor was removed as it was defect
De originele motor was reeds verwijderd omdat hij defect was

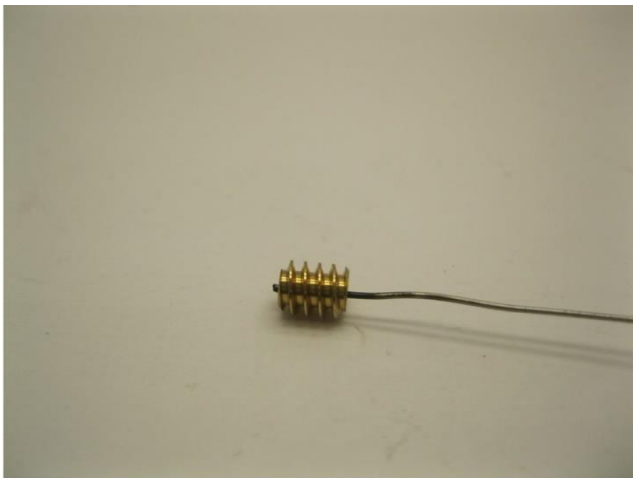


Die Teile des Bausatz
The parts of the kit
Onderdelen van de ombouwsset

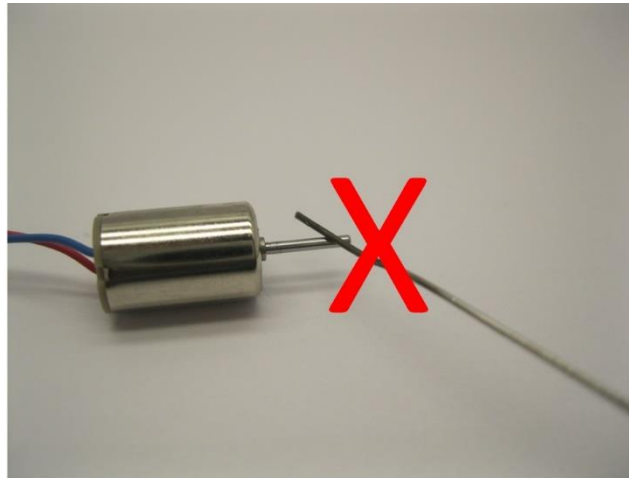




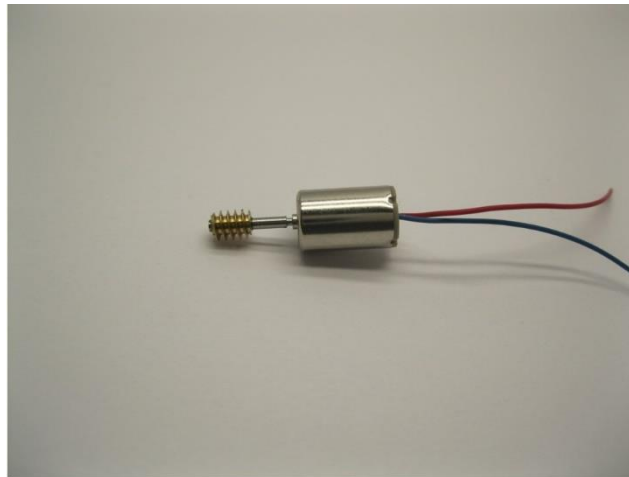
Metall Teile werden mit Loctite oder Metal Epoxy Kleber verklebt
 Metal parts are glued with Loctite or metal epoxy glue
 Metalen onderdelen worden gelijmd met loctite of epoxylijm voor metalen



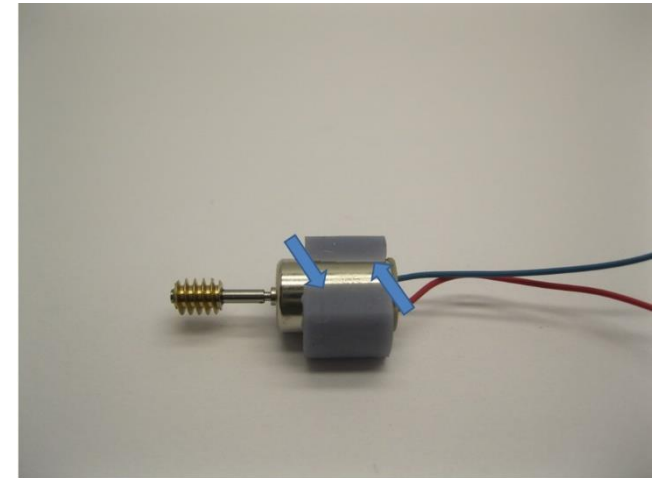
Tragen Sie Klebstoff auf die Innenseite des Teile auf
 Apply glue on the inside of the parts
 Plaats alleen lijm aan de binnenzijde van de onderdelen



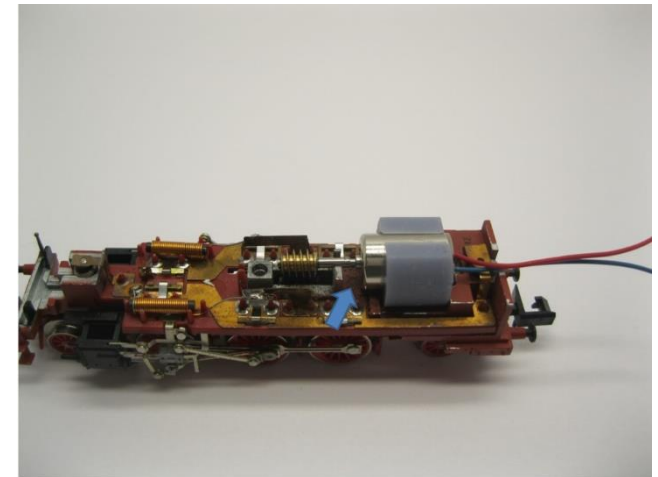
Tragen Sie keinen Kleber auf die Achse auf
 Don't apply glue on the axle
 Plaats geen lijm op de as



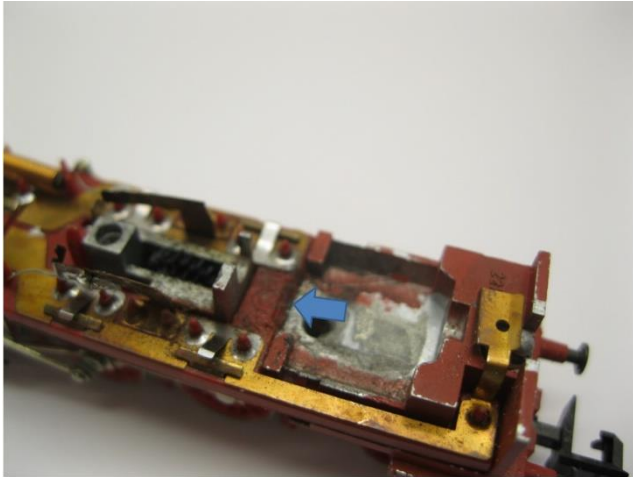
Die Teile sind geklebt
 The parts are glued
 De onderdelen zijn verlijmd



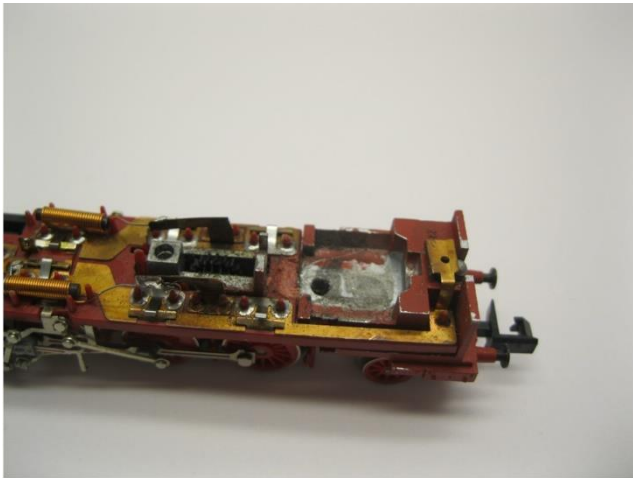
Der Motor wird mit Epoxidkleber oder Sekundenkleber in den Motorhalterteile eingeklebt
 The motor is glued into the motor holder parts with epoxy glue or super glue
 De motor wordt verlijmd in de motorhouder delen met secondelijm of epoxy lijm



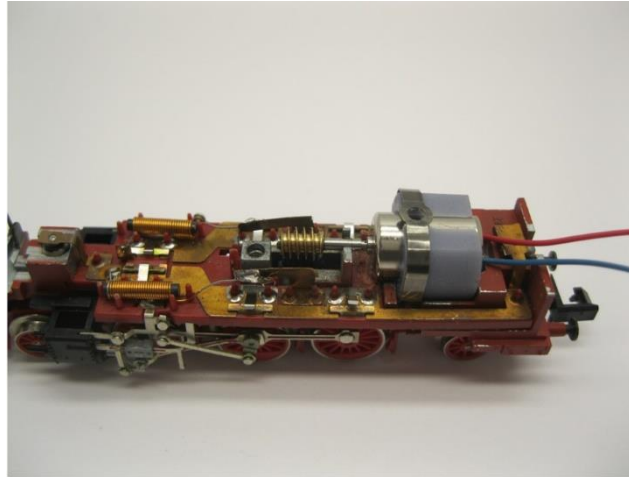
Passgenauigkeit prüfen
 Test fit
 Controleer de passing



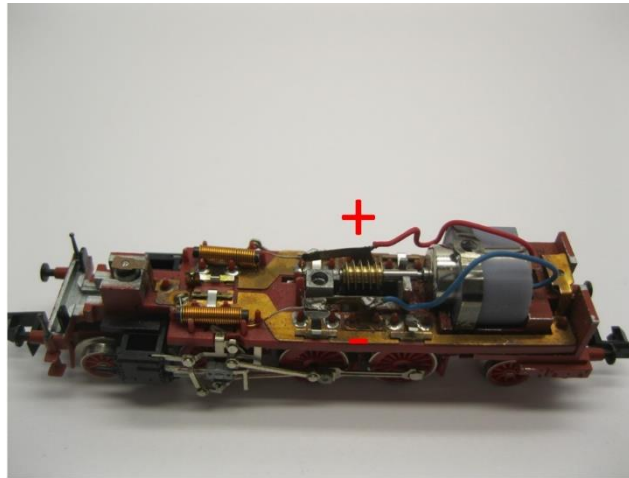
Material muss gefräst werden
Material must be milled
Materiaal moet gefreesd worden



Material muss gefräst werden
Material must be milled
Materiaal moet gefreesd worden



Motor platzieren
Mount motor
Plaats de motor



Löten Sie die Drähte
Solder the wires
Soldeer de draden



Gehäuse platzieren
Mount body
Plaats de kap



Umbau fertig
Upgrade complete
Ombouw gereed



Micromotor NA021G

