

# MICROMOTOR HSR005C

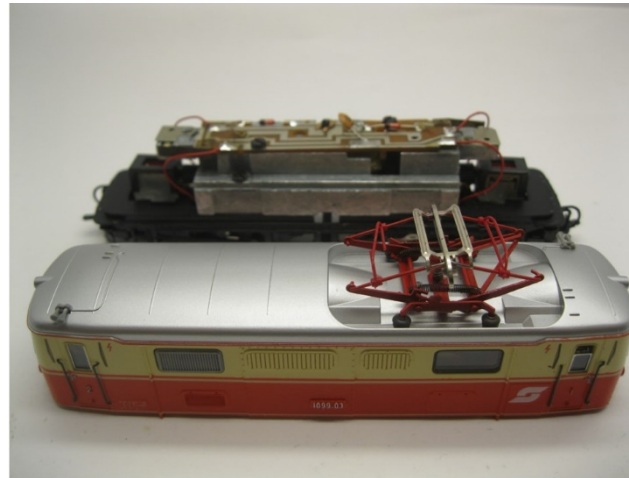
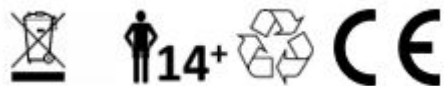


Roco H0e Rh 1099  
 Glockenankermotor Umbau Spur H0e  
 Coreless motor upgrade H0e gauge  
 Klokankermotor ombouwset H0e

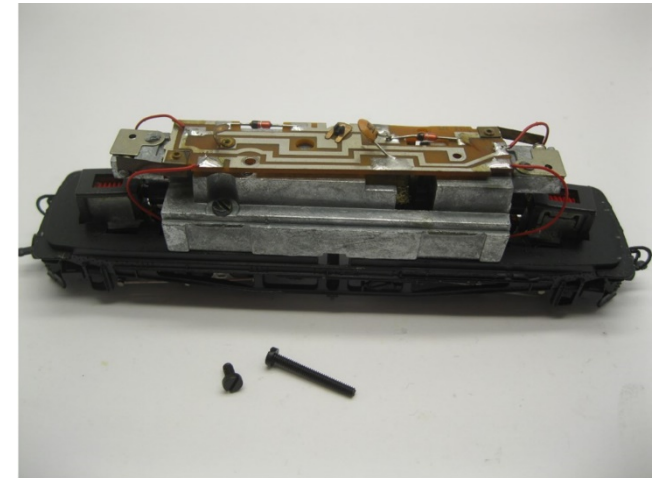
**Warning!** This product is not a toy and is not suitable for children under 14 years contains small parts. This product contains electronic parts so do not throw them in the household waste but hand them in separately. The EU WEEE directive applies.

**Achtung!** Dieses Produkt ist kein Spielzeug, nicht für Kinder unter 14 Jahren geeignet, enthält Kleinteile. Dieses Produkt enthält elektronische Teile. Werfen Sie diese daher nicht in den Müll, sondern getrennt einsammeln. Es gilt die EU-WEEE-Richtlinie.

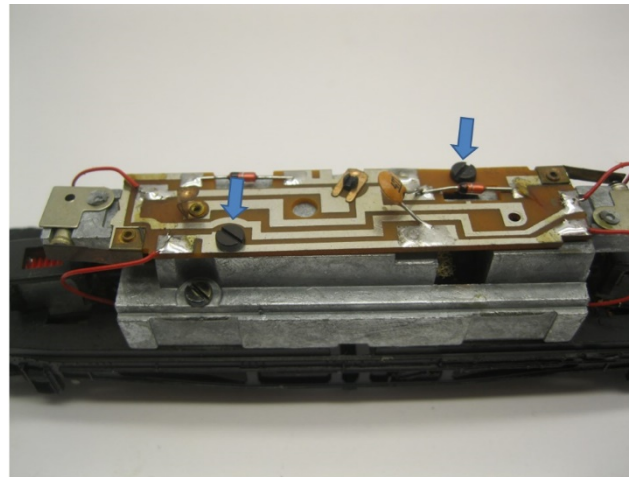
**Opgelet!** Dit product is geen speelgoed, niet geschikt voor kinderen onder de 14 jaar, bevat kleine onderdelen. Dit product bevat elektronische onderdelen, gooi dit daarom niet bij het huisafval maar lever dit apart in. WEEE-Regelgeving van de EU is van toepassing.



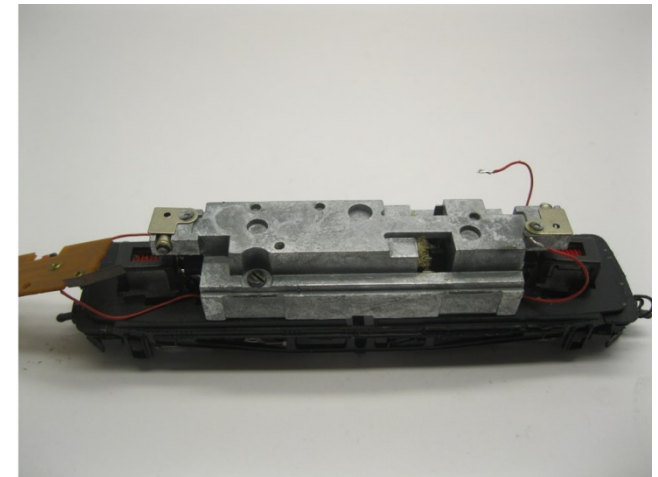
Gehäuse entfernen  
 Remove housing  
 Verwijder de kap



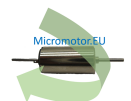
Ausbau alter Motor  
 Take out the old motor  
 Demonteer de oude motor

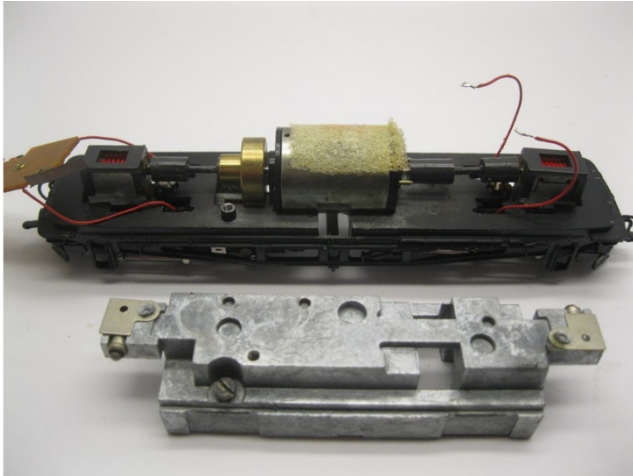


Ausbau alter Motor  
 Take out the old motor  
 Demonteer de oude motor

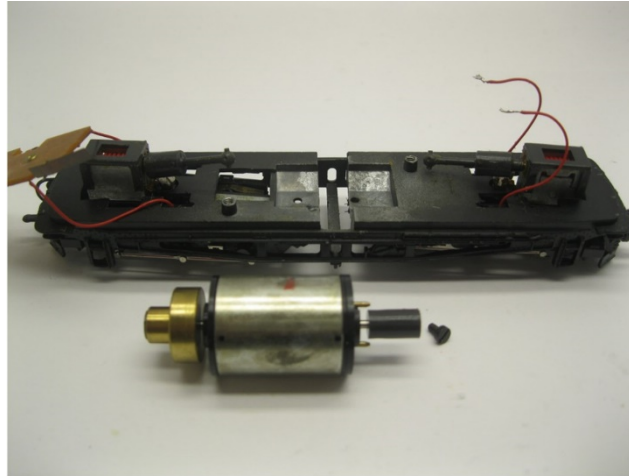


Ausbau alter Motor  
 Take out the old motor  
 Demonteer de oude motor





Ausbau alter Motor  
Take out the old motor  
Demonteer de oude motor



Ausbau alter Motor  
Take out the old motor  
Demonteer de oude motor



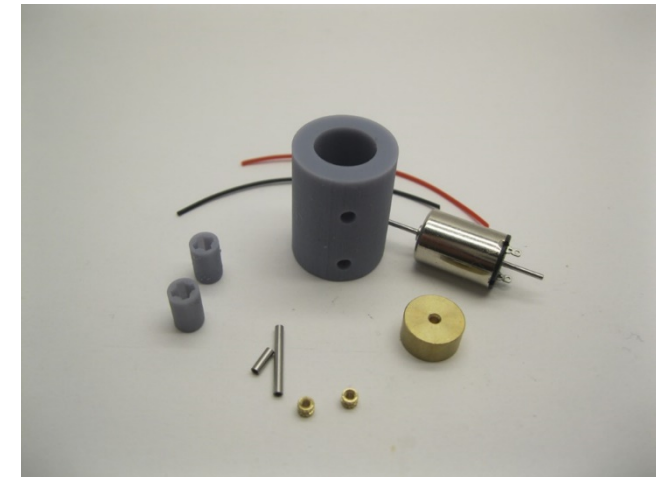
Maße prüfen  
Check dimensions  
Controleer de maatvoering



Ausbau alter Motor  
Take out the old motor  
Demonteer de oude motor



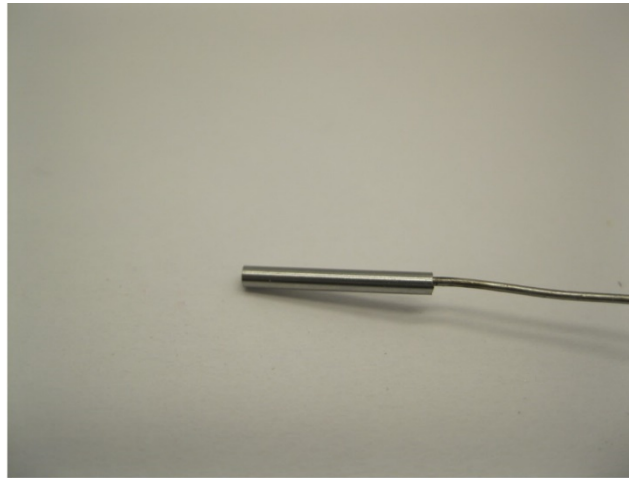
Maße prüfen  
Check dimensions  
Controleer de maatvoering



Die Teile des Bausatz  
Parts of the kit  
Onderdelen van de ombouwsset



Metall Teile werden mit Loctite oder Metal Epoxy Kleber verklebt  
 Metal parts are glued with Loctite or metal epoxy glue  
 Metalen onderdelen worden gelijmd met metaallijm of epoxylijm voor metalen



Tragen Sie Klebstoff auf die Innenseite des Teile auf  
 Apply glue on the inside of the part  
 Plaats alleen lijm aan de binnenzijde van de onderdelen



Die Metallteile sind verklebt  
 The metal parts are glued  
 De metaaldelen zijn verlijmd



Metall Teile werden mit Loctite oder Metal Epoxy Kleber verklebt  
 Metal parts are glued with Loctite or metal epoxy glue  
 Metalen onderdelen worden gelijmd met metaallijm of epoxylijm voor metalen

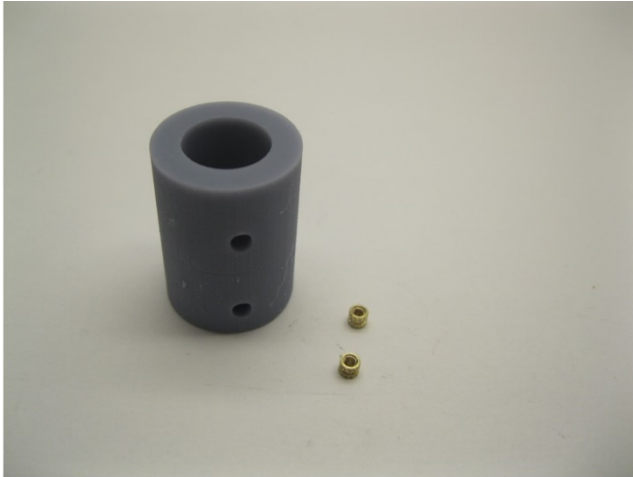


Tragen Sie keinen Kleber auf die Achse auf  
 Don't apply glue on the axle  
 Plaats geen lijm op de as

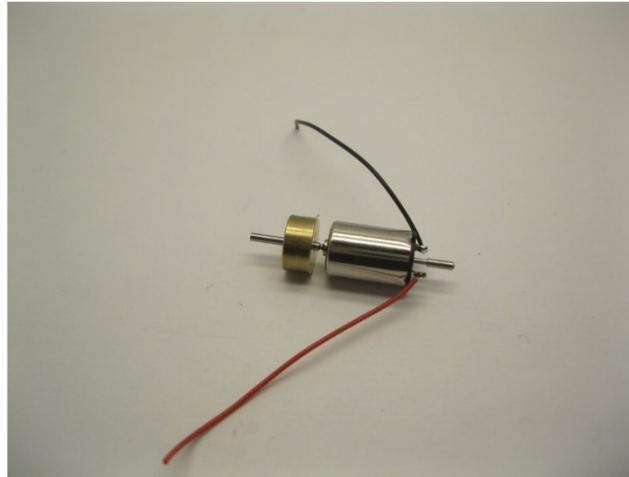


Maße prüfen  
 Check dimensions  
 Controleer de maatvoering

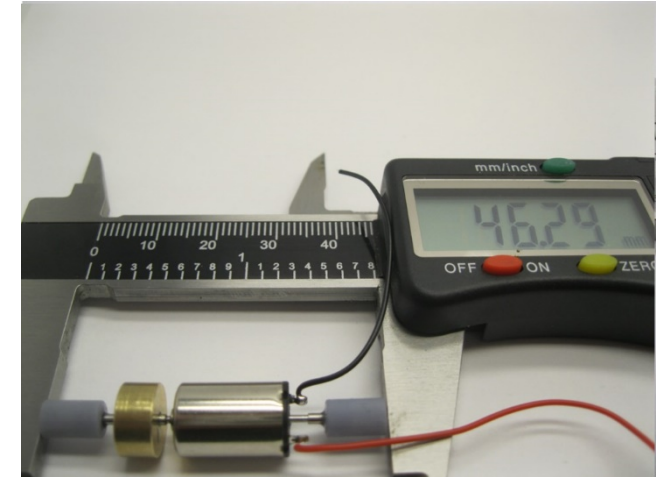




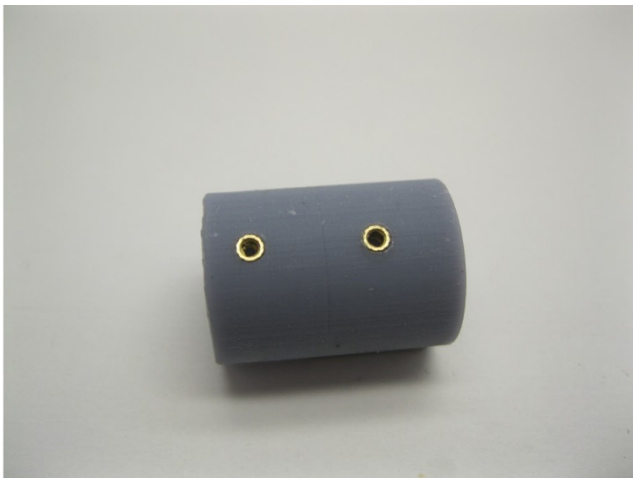
Die Messingeinsätze werden mit Sekundenkleber in den Motorhalter eingeklebt  
 The brass inserts are glued into the motor holder with superglue  
 De messing inserts worden met secondelijm verlijmd in de motor houder



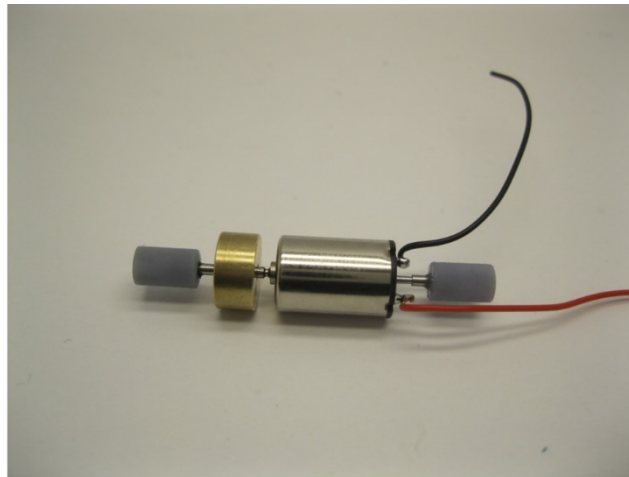
Drähte löten  
 Solder the wires  
 Soldeer de draden



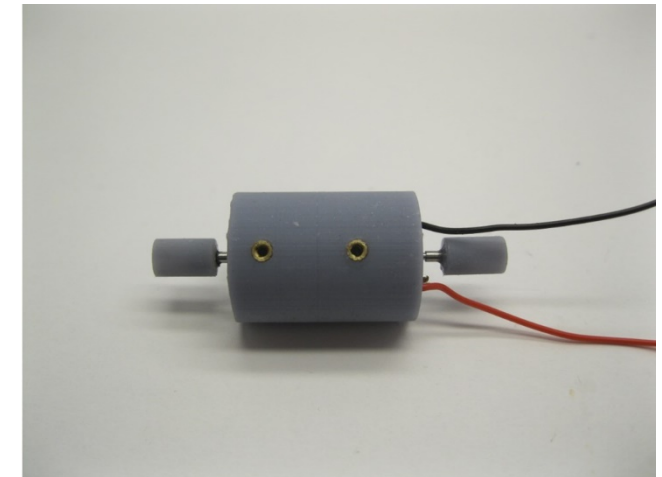
Maße prüfen  
 Check dimensions  
 Controleer de maatvoering



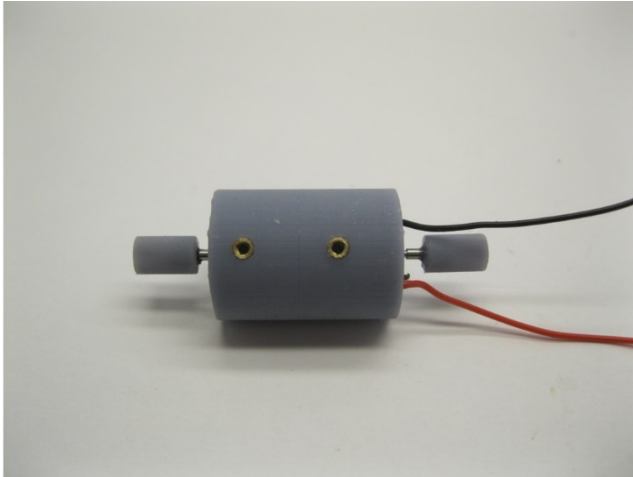
Die Messingeinsätze eingeklebt  
 The brass inserts are glued  
 De messing inserts zijn verlijmd



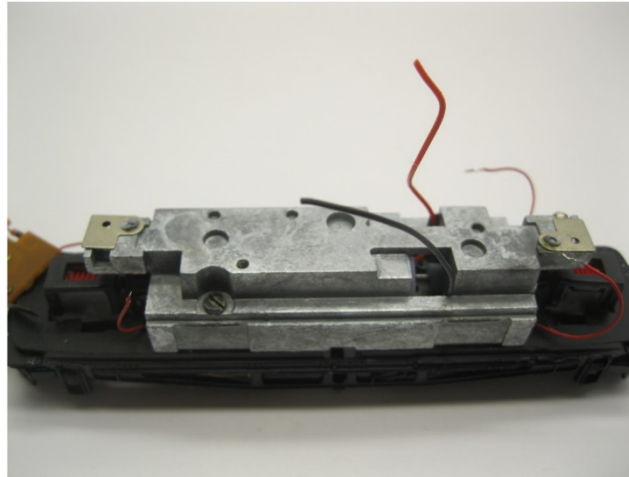
Kardankupplungen platzieren  
 Mount cardan couplers  
 Plaats de kardankoppelingen



Motor im Motorhalter platzieren  
 Place motor in motor holder  
 Plaats de motor in de motor houder



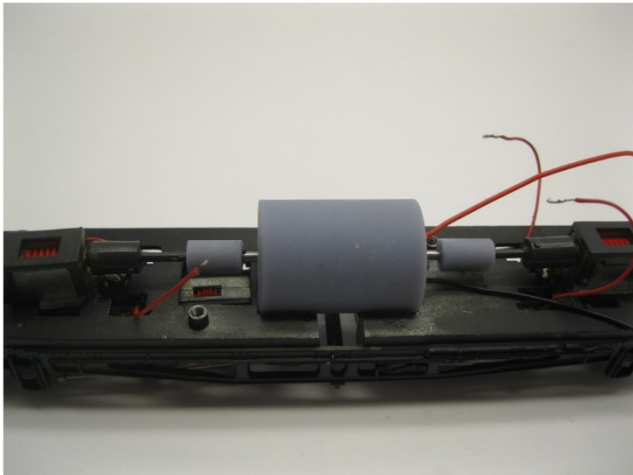
Der Motor wird mit Epoxidkleber oder Sekundenkleber in den Motorhalter eingeklebt  
 The motor is glued into the motor holder with epoxy glue or super Glue  
 De motor wordt in de motorhouder verlijmd met secondelijm of epoxy lijm



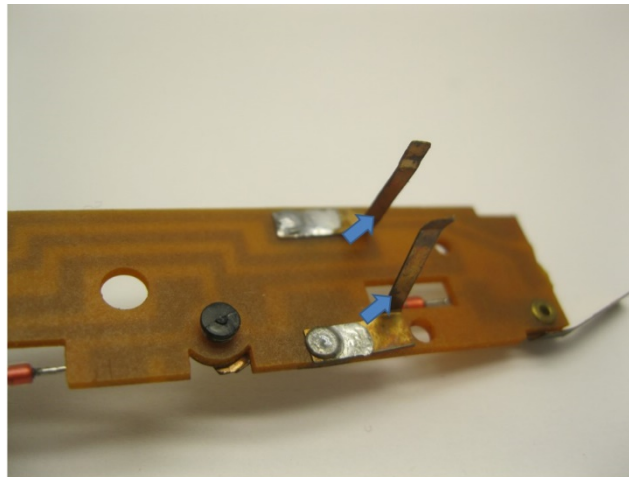
Gewicht platzieren  
 Mount the weight  
 Plaats het gewicht



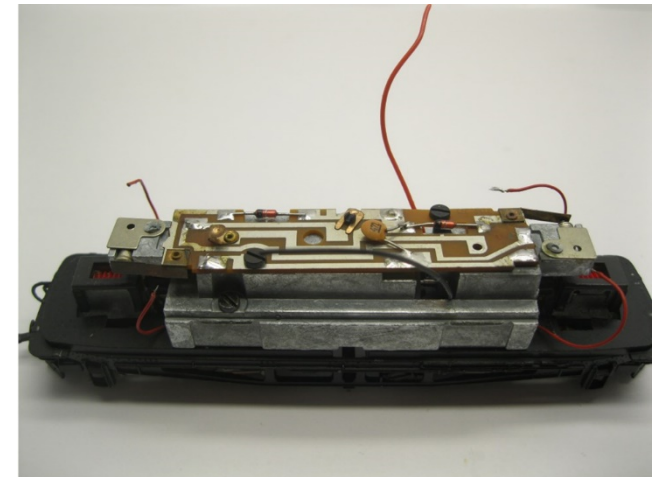
Alter Motorkontakte entfernen  
 Remove old motor contacts  
 Verwijder de oude motorcontacten



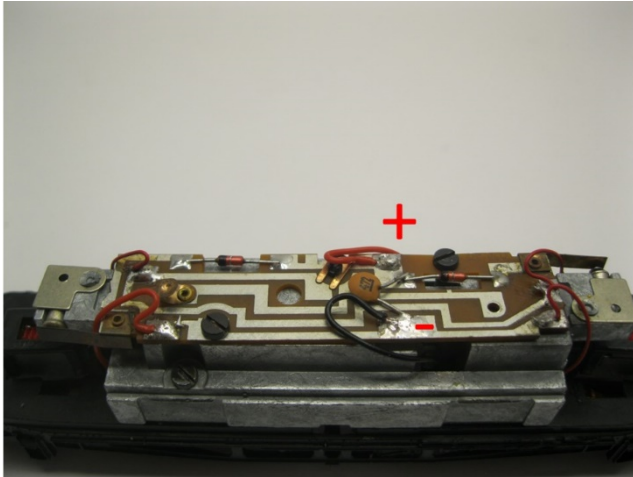
Motor platzieren  
 Mount the motor  
 Plaats de motor



Alter Motorkontakte entfernen  
 Remove old motor contacts  
 Verwijder de oude motorcontacten



Platzieren Sie die Leiterplatte  
 Place the PCB  
 Plaats de printplaat



Drähte löten  
Solder the wires  
Soldeer de draden



Umbau fertig  
Upgrade complete  
Ombouw gereed



Gehäuse platzieren  
Mount body  
Plaats de kap



Micromotor HSR005C