

MICROMOTOR TRC005C

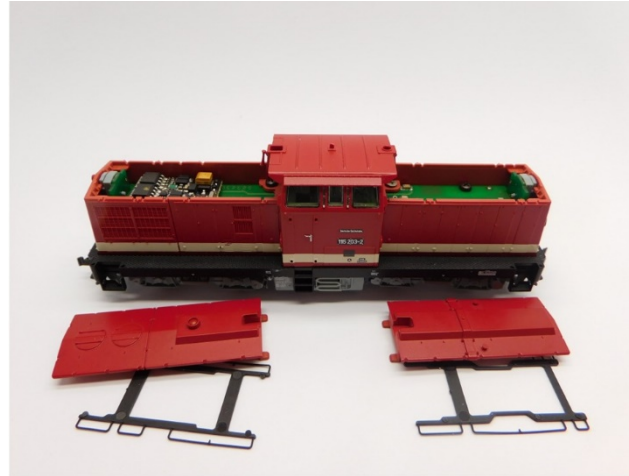


Roco DR BR 110, BR 111, BR 112, BR 114, BR 115,
BR 202, BR 204, V100 - Motor 138810
Glockenankermotor Umbau Spur TT
Coreless motor upgrade TT gauge
Klokankermotor ombouwset TT

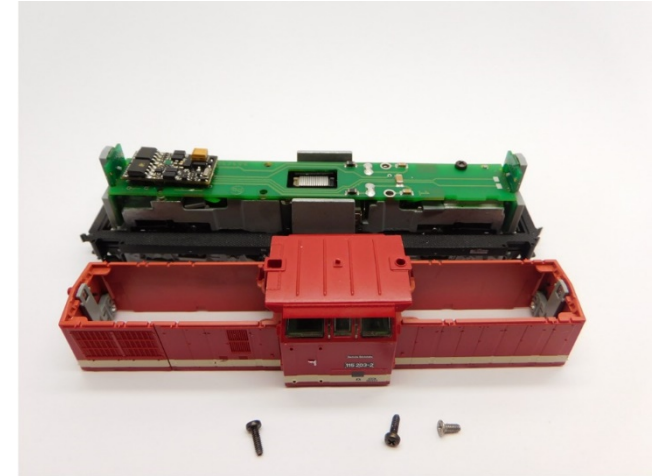
Warning! This product is not a toy and is not suitable for children under 14 years contains small parts. This product contains electronic parts so do not throw them in the household waste but hand them in separately. The EU WEEE directive applies.

Achtung! Dieses Produkt ist kein Spielzeug, nicht für Kinder unter 14 Jahren geeignet, enthält Kleinteile. Dieses Produkt enthält elektronische Teile. Werfen Sie diese daher nicht in den Müll, sondern getrennt einsammeln. Es gilt die EU-WEEE-Richtlinie.

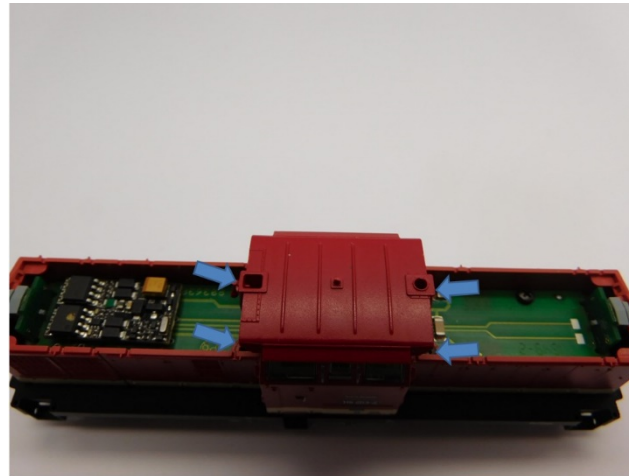
Opgelet! Dit product is geen speelgoed, niet geschikt voor kinderen onder de 14 jaar, bevat kleine onderdelen. Dit product bevat elektronische onderdelen, gooi dit daarom niet bij het huisafval maar lever dit apart in. WEEE-Regelgeving van de EU is van toepassing.



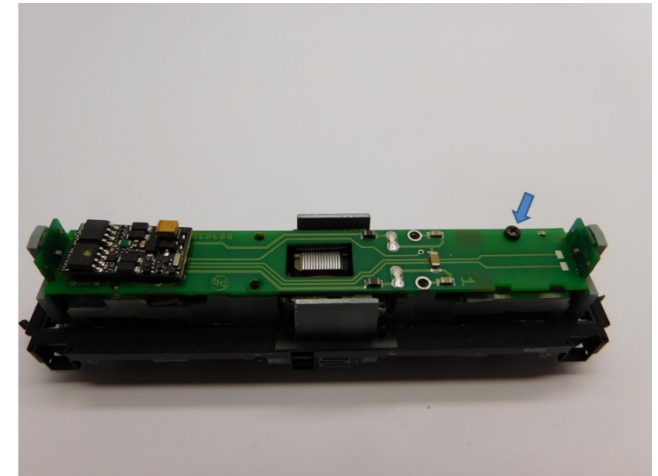
Gehäuse entfernen
Remove housing
Verwijder de kap



Gehäuse entfernen
Remove housing
Verwijder de kap

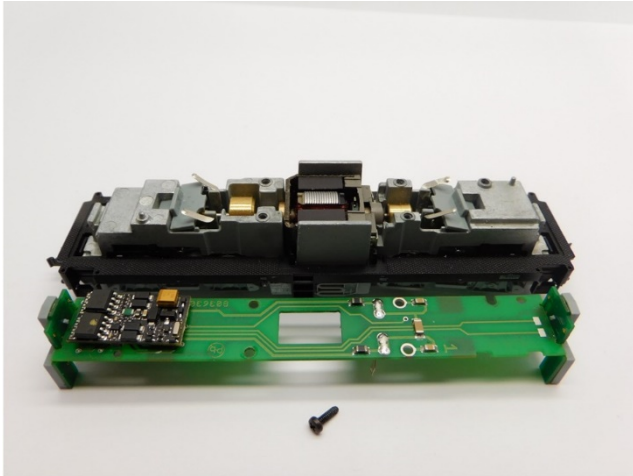


Gehäuse entfernen
Remove housing
Verwijder de kap

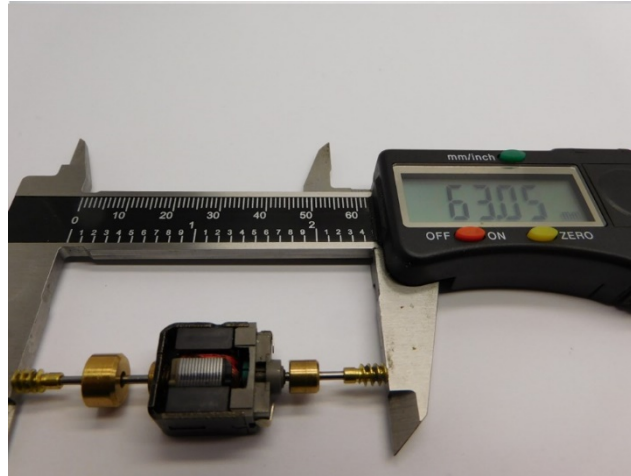


Platine entfernen
Remove PCB
Verwijder de printplaat

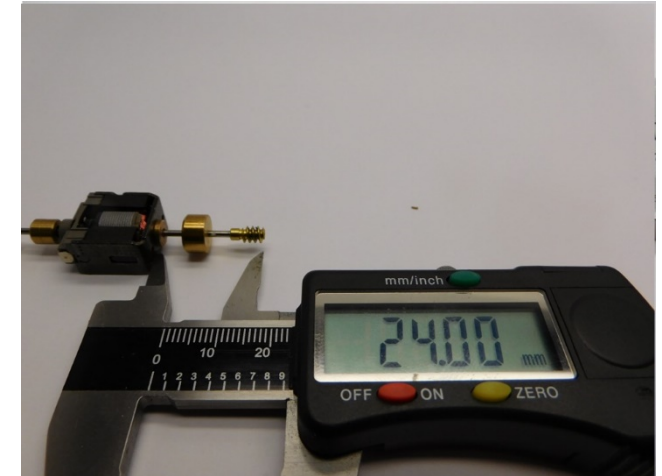




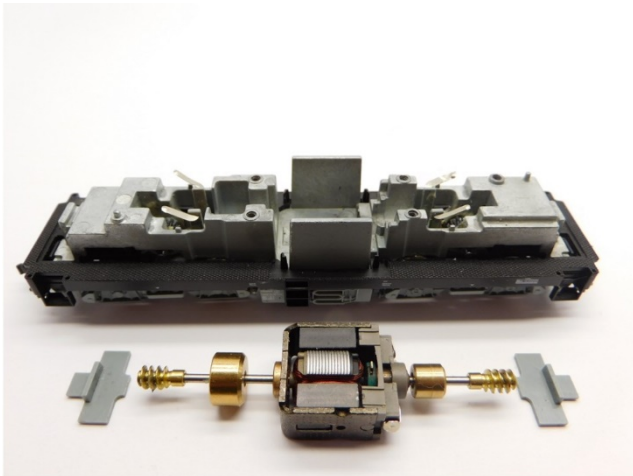
Platine entfernen
Remove PCB
Verwijder de printplaat



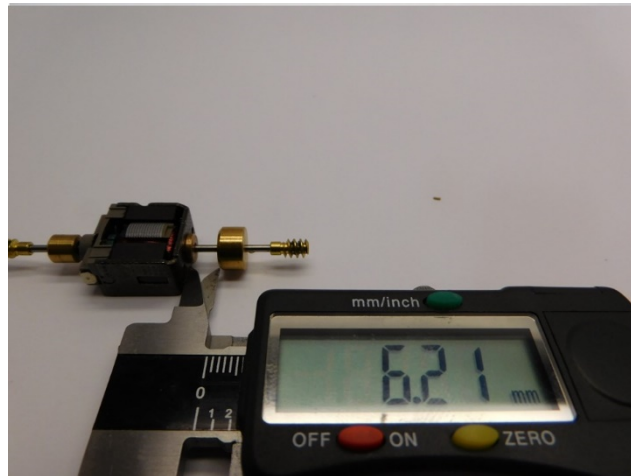
Maße prüfen
Check dimensions
Controleer de maatvoering



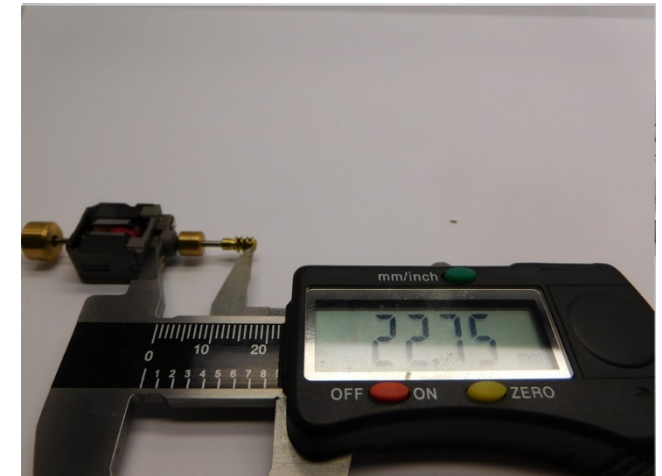
Maße prüfen
Check dimensions
Controleer de maatvoering



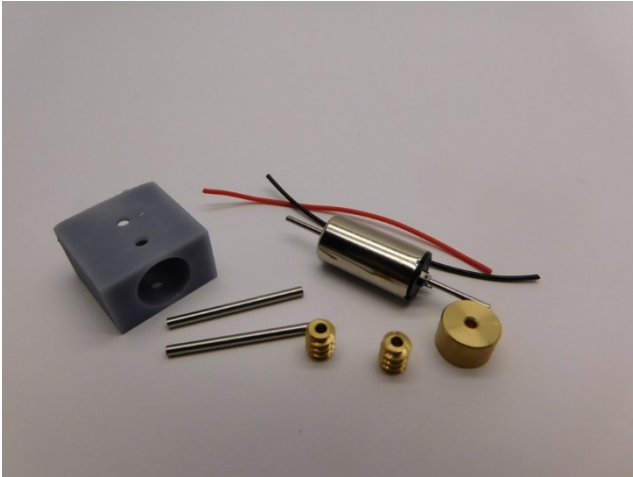
Ausbau alter Motor
Take out the old motor
Demonteer de oude motor



Maße prüfen
Check dimensions
Controleer de maatvoering



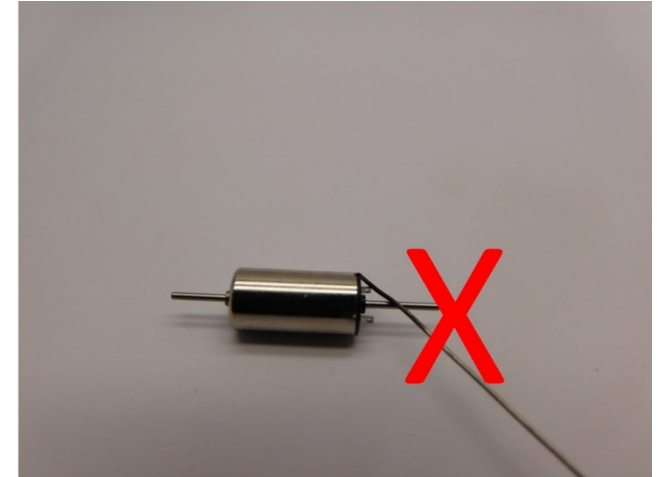
Maße prüfen
Check dimensions
Controleer de maatvoering



Die Teile des Bausatz
Parts of the kit
Onderdelen van de ombouwset



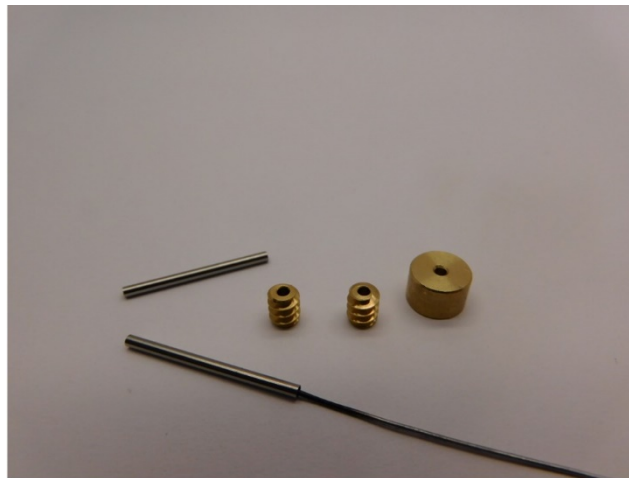
Metall Teile werden mit Loctite oder Metal Epoxy Kleber verklebt
Metal parts are glued with Loctite or metal epoxy glue
Metalen onderdelen worden gelijmd met metaallijm of epoxylijm voor metalen



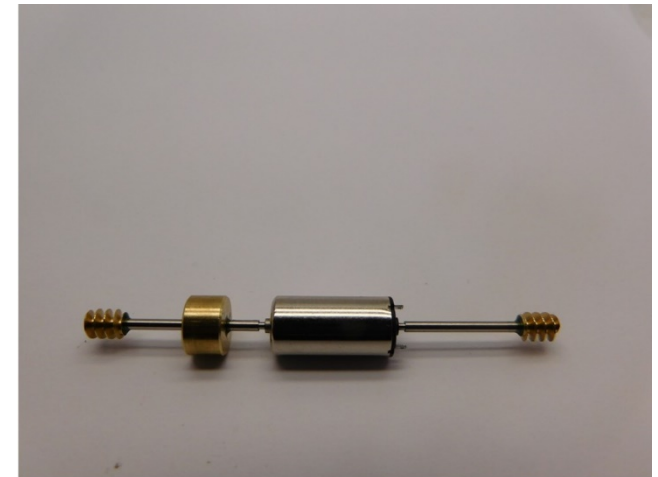
Tragen Sie keinen Kleber auf die Achse auf
Don't apply glue on the axle
Plaats geen lijm op de as



Metall Teile werden mit Loctite oder Metal Epoxy Kleber verklebt
Metal parts are glued with Loctite or metal epoxy glue
Metalen onderdelen worden gelijmd met metaallijm of epoxylijm voor metalen



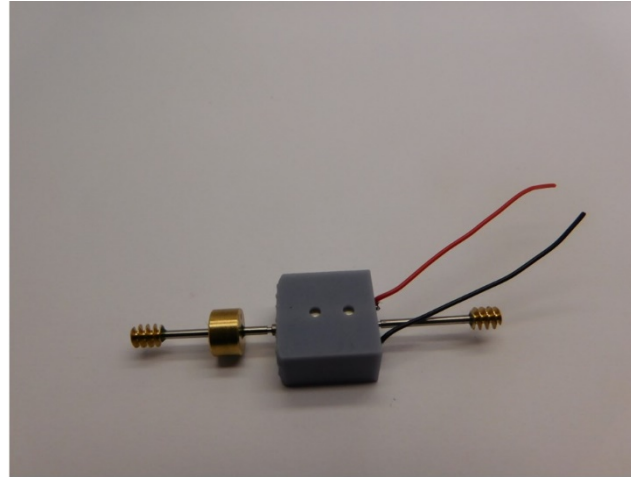
Tragen Sie Klebstoff auf die Innenseite des Teile auf
Apply glue on the inside of the part
Plaats alleen lijm aan de binnenzijde van de onderdelen



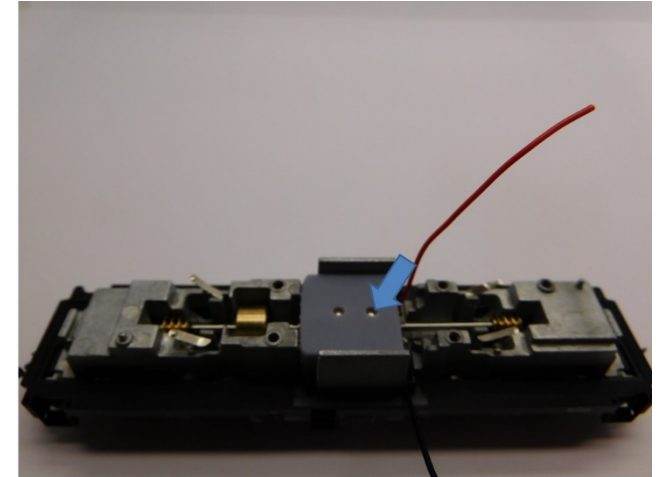
Die Metallteile sind verklebt
The metal parts are glued
De metaaldelen zijn verlijmd



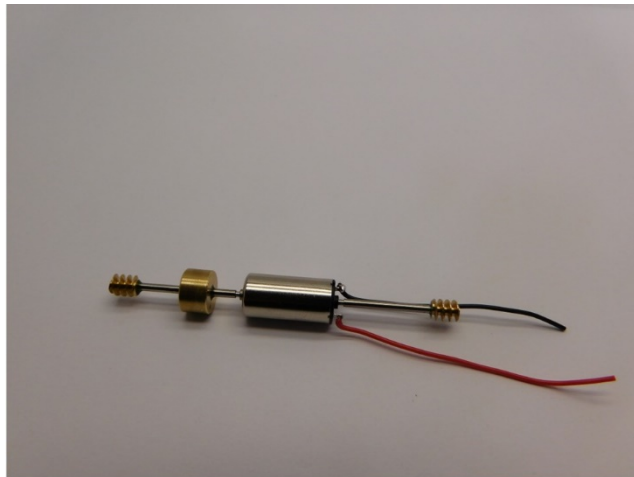
Maße prüfen
Check dimensions
Controleer de maatvoering



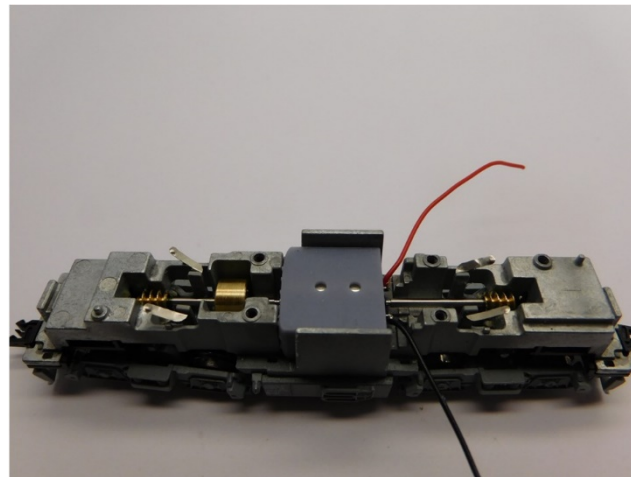
Motor im Motorhalter platzieren
Place motor in motor holder
Plaats de motor in de motor houder



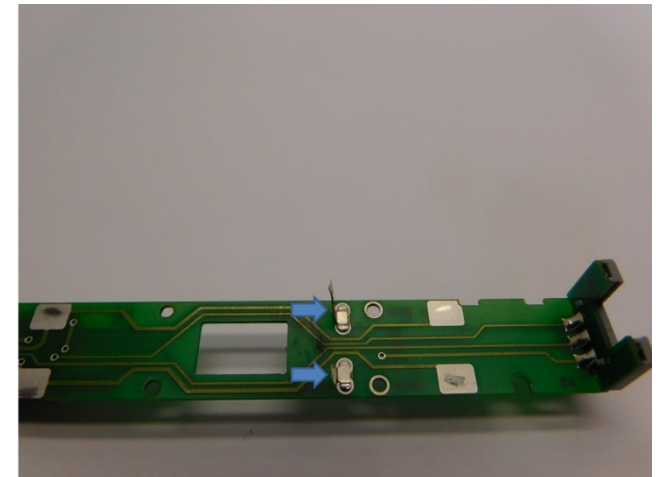
Der Motor wird mit Epoxidkleber oder Sekundenkleber in den Motorhalter eingeklebt
The motor is glued into the motor holder with epoxy glue or super Glue
De motor wordt in de motorhouder verlijmd met secundelijm of epoxy lijm



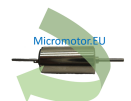
Drähte löten
Solder the wires
Soldeer de draden

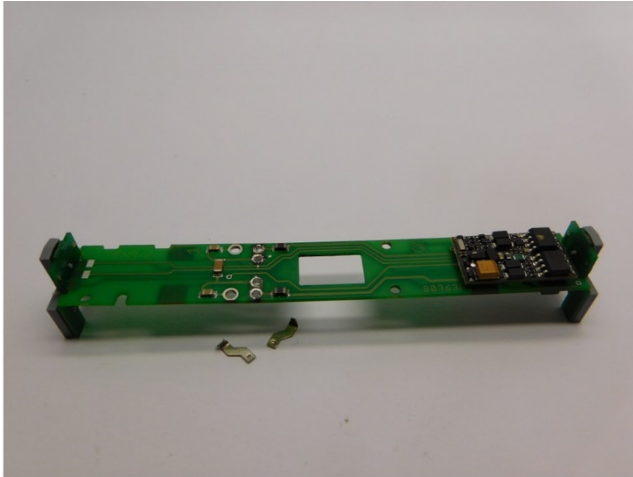


Motor platzieren
Mount the motor
Plaats de motor

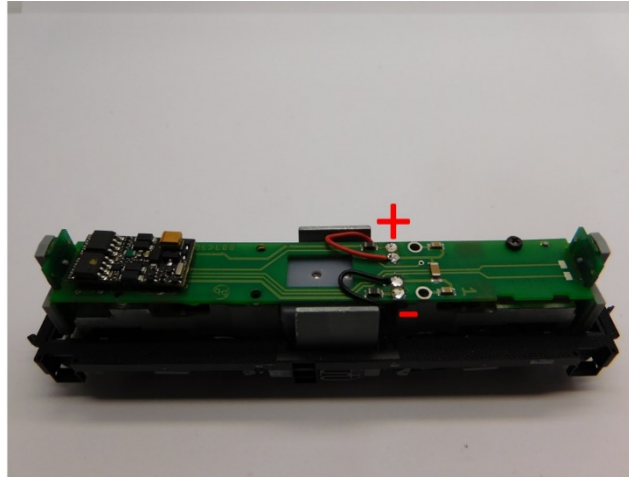


Alter Motorkontakte entfernen
Remove old motor contacts
Verwijder de oude motorcontacten





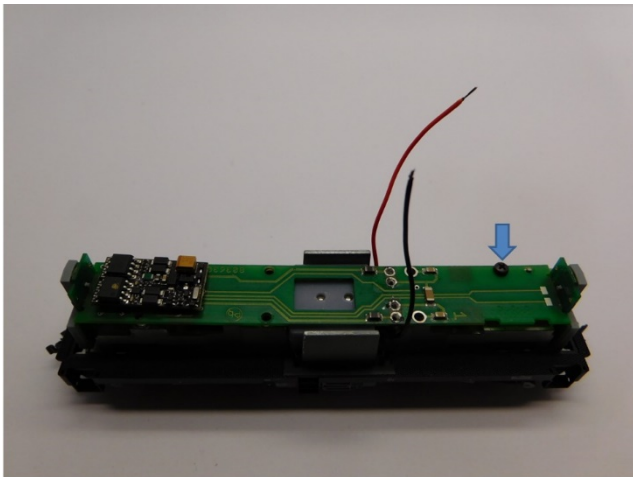
Alter Motorkontakte entfernen
Remove old motor contacts
Verwijder de oude motorcontacten



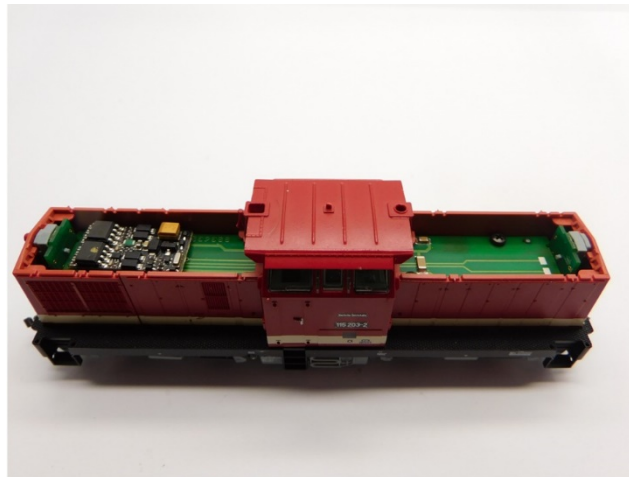
Drähte löten
Solder the wires
Soldeer de draden



Gehäuse platzieren
Mount body
Plaats de kap



Platine platzieren
Place the PCB
Plaats de printplaat



Gehäuse platzieren
Mount body
Plaats de kap



Umbau fertig
Upgrade complete
Ombouw gereed



Micromotor TRC005C

