

MICROMOTOR NM036G

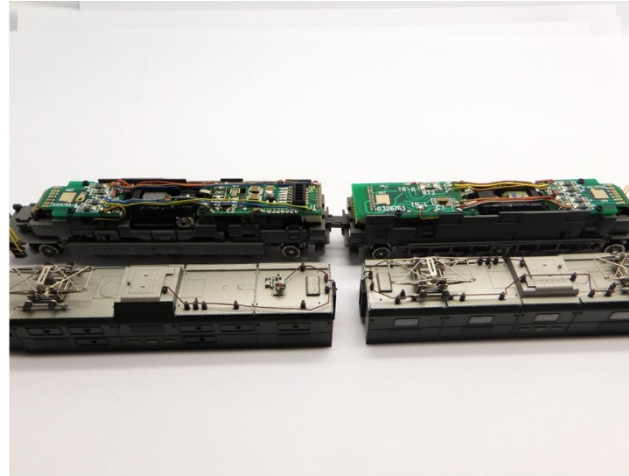
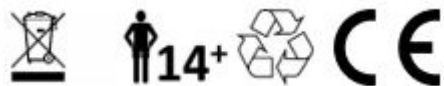


Minitrix SBB Ae 8/14
Glockenankermotor Umbau Spur N
Coreless motor upgrade N gauge
Klokankermotor ombouwset N

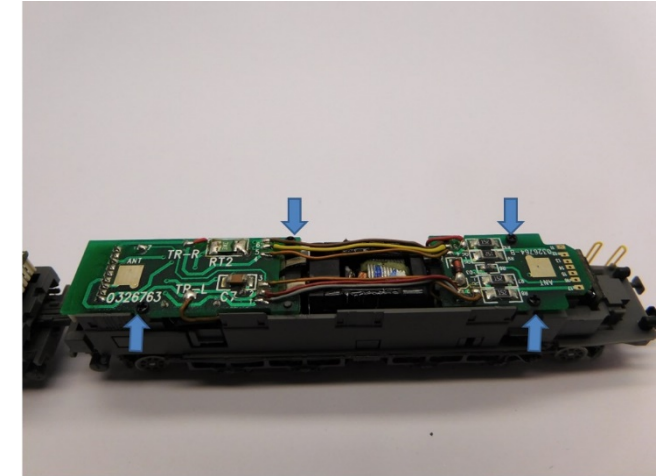
Warning! This product is not a toy and is not suitable for children under 14 years contains small parts. This product contains electronic parts so do not throw them in the household waste but hand them in separately. The EU WEEE directive applies.

Achtung! Dieses Produkt ist kein Spielzeug, nicht für Kinder unter 14 Jahren geeignet, enthält Kleinteile. Dieses Produkt enthält elektronische Teile. Werfen Sie diese daher nicht in den Müll, sondern getrennt einsammeln. Es gilt die EU-WEEE-Richtlinie.

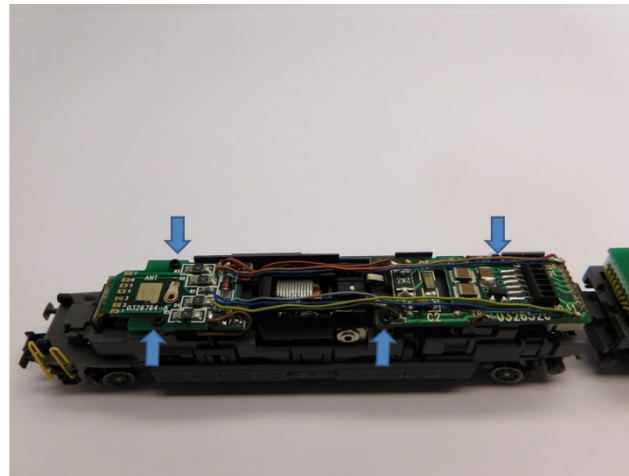
Opgelet! Dit product is geen speelgoed, niet geschikt voor kinderen onder de 14 jaar, bevat kleine onderdelen. Dit product bevat elektronische onderdelen, gooi dit daarom niet bij het huisafval maar lever dit apart in. WEEE-Regelgeving van de EU is van toepassing.



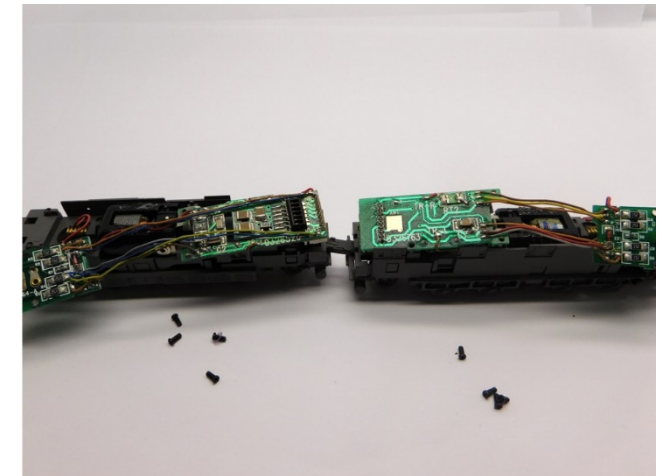
Gehäuse entfernen
Remove housing
Verwijder de kap



Entfernen sie die Leiterplatte
Remove the circuit board
Demonteer de printplaat

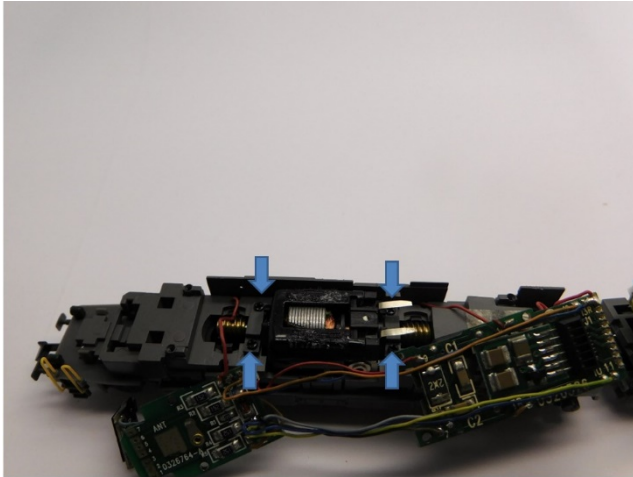


Entfernen sie die Leiterplatte
Remove the circuit board
Demonteer de printplaat

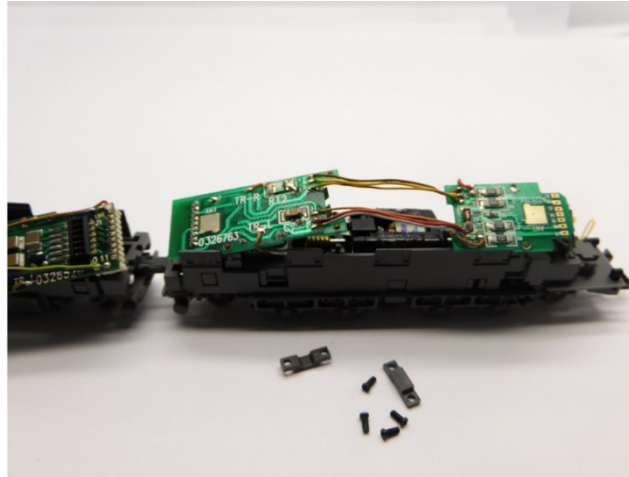


Entfernen sie die Leiterplatte
Remove the circuit board
Demonteer de printplaat





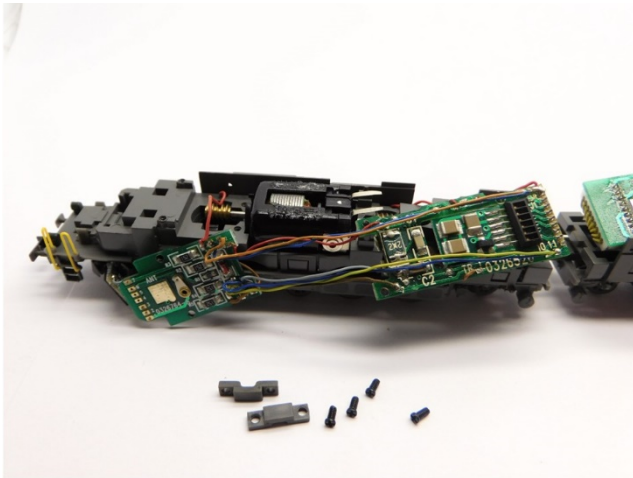
Ausbau alter Motor
Take out the old motor
Demonteer de oude motor



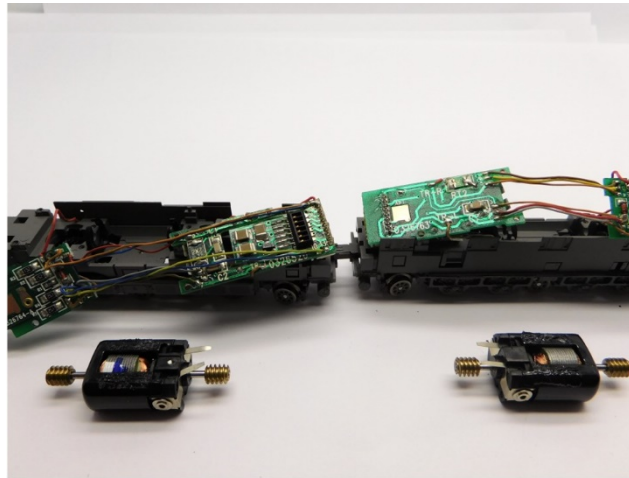
Ausbau alter Motor
Take out the old motor
Demonteer de oude motor



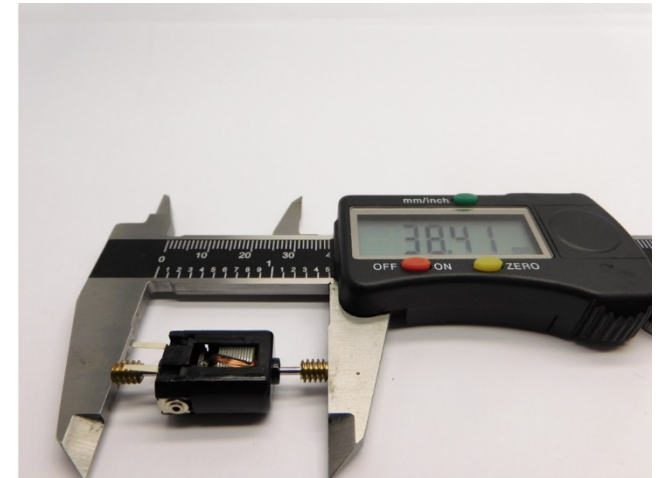
Ausbau alter Motor
Take out the old motor
Demonteer de oude motor



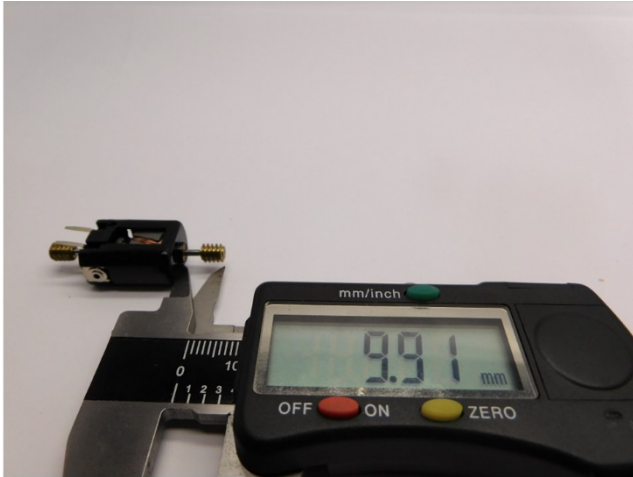
Ausbau alter Motor
Take out the old motor
Demonteer de oude motor



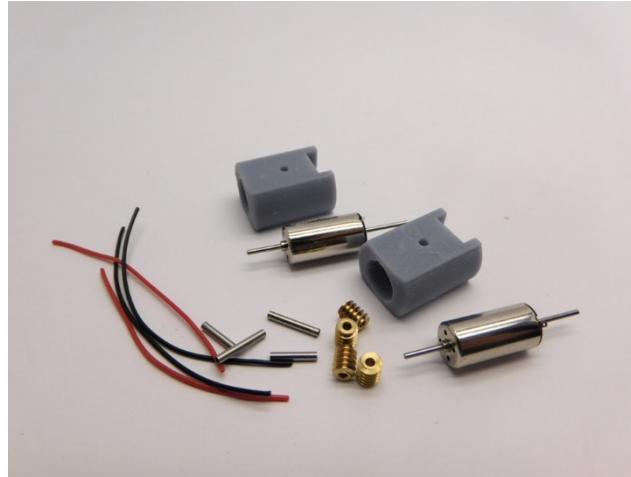
Ausbau alter Motor
Take out the old motor
Demonteer de oude motor



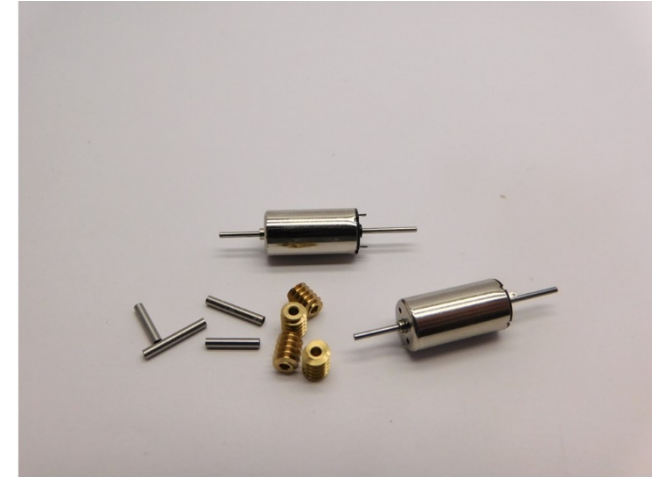
Maße prüfen
Check dimensions
Controleer de maatvoering



Maße prüfen
Check dimensions
Controleer de maatvoering



Die Teile des Bausatz
Parts of the kit
Onderdelen van de ombouwset



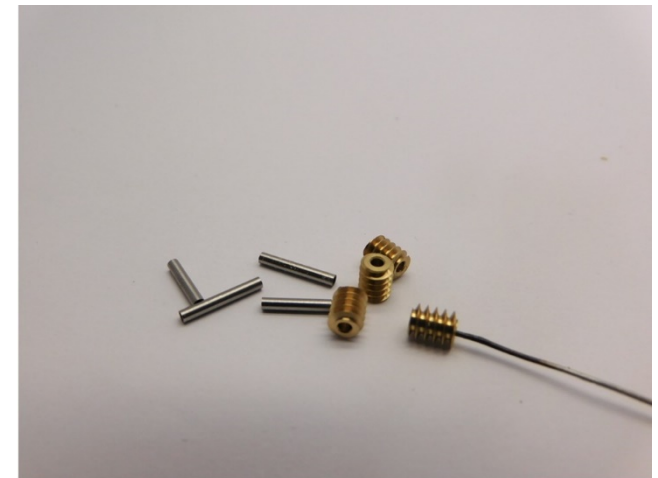
Metallteile werden mit Loctite oder Metal Epoxy Kleber verklebt
Metal parts are glued with Loctite or metal epoxy glue
Metalen onderdelen worden gelijmd met metaallijm of epoxylijm voor metalen



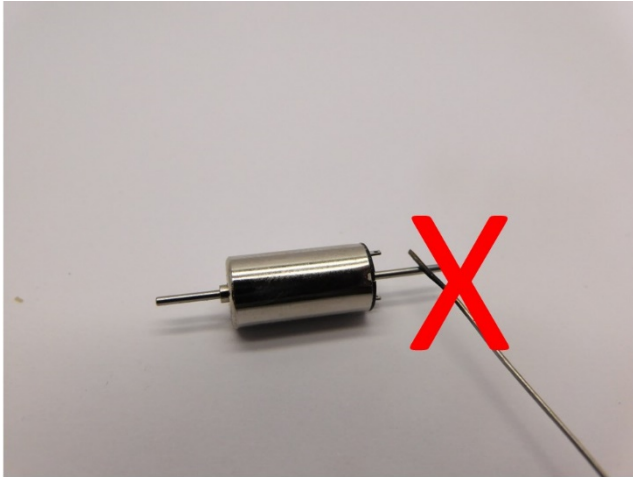
Maße prüfen
Check dimensions
Controleer de maatvoering



Metallteile werden mit Loctite oder Metal Epoxy Kleber verklebt
Metal parts are glued with Loctite or metal epoxy glue
Metalen onderdelen worden gelijmd met metaallijm of epoxylijm voor metalen



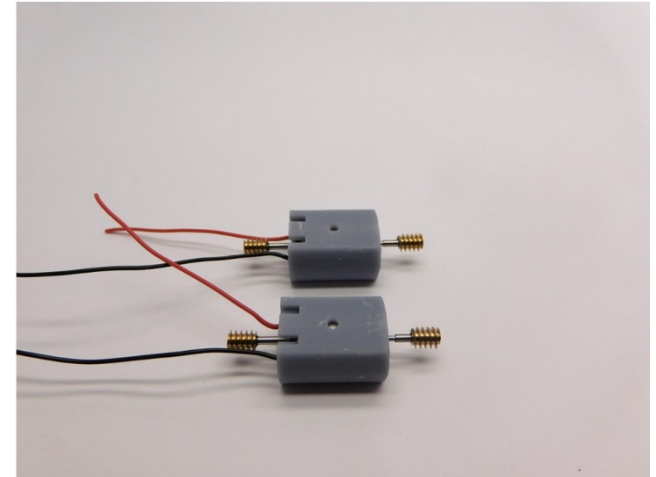
Tragen Sie Klebstoff auf die Innenseite des Teile auf
Apply glue on the inside of the parts
Plaats alleen lijm aan de binnenzijde van de onderdelen



Tragen Sie keinen Kleber auf die Achse auf
Don't apply glue on the axle
Plaats geen lijm op de as



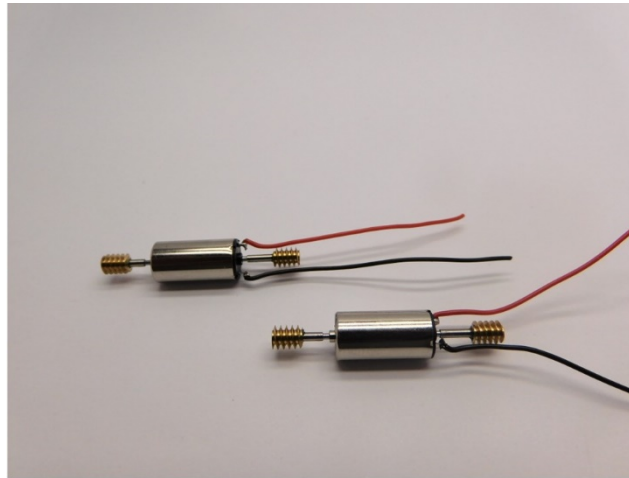
Maße prüfen
Check dimensions
Controleer de maatvoering



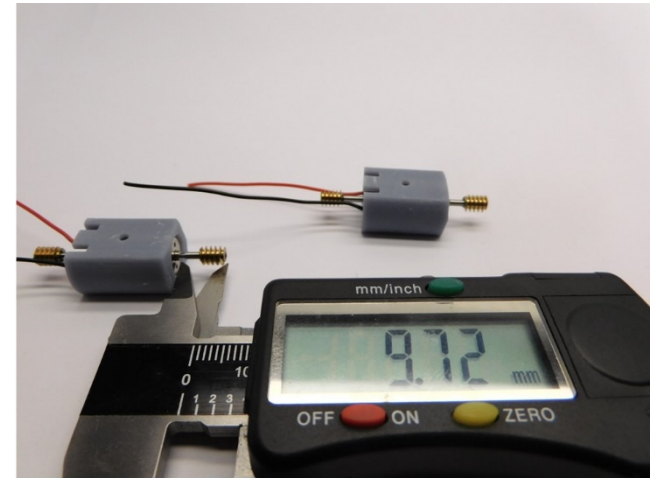
Platzieren die Motor in die Motorhalter
Place the motor in the motor holder
Plaats de motor in de motor houder



Die Metallteile sind verklebt
The metal parts are glued
De metaaldelen zijn verlijmd

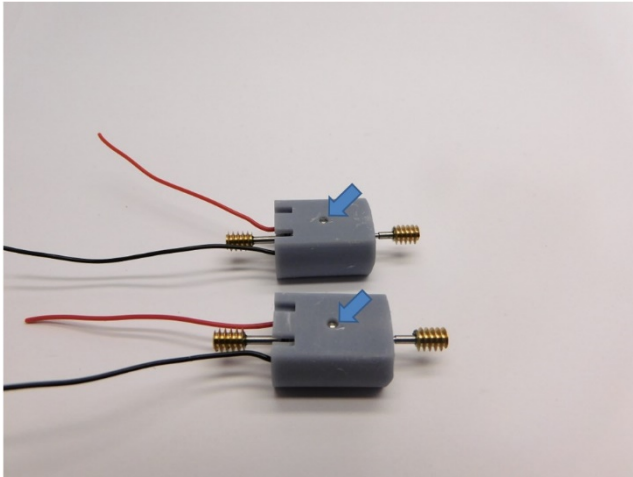


Drähte löten
Solder the wires
Soldeer de draden

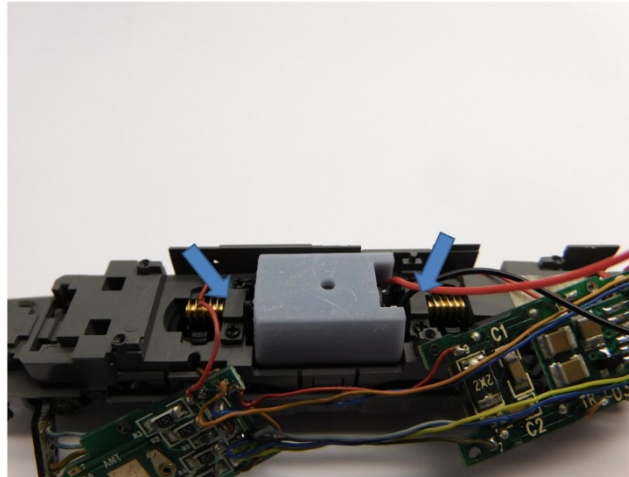


Maße prüfen
Check dimensions
Controleer de maatvoering

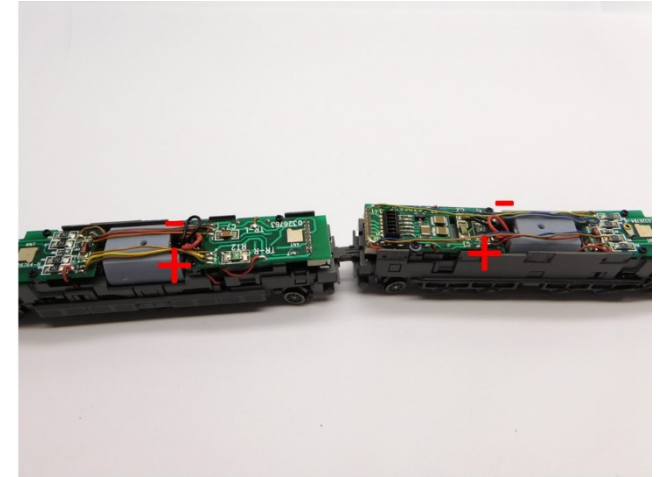




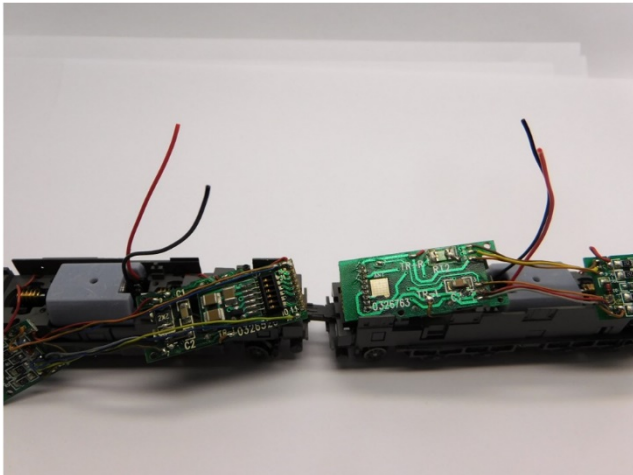
Der Motor wird mit Epoxidkleber oder Sekundenkleber in den Motorhalter eingeklebt
 The motor is glued into the motor holder with epoxy glue or super glue
 De motor wordt in de motorhouder verlijmd met secondelijm of epoxy lijm



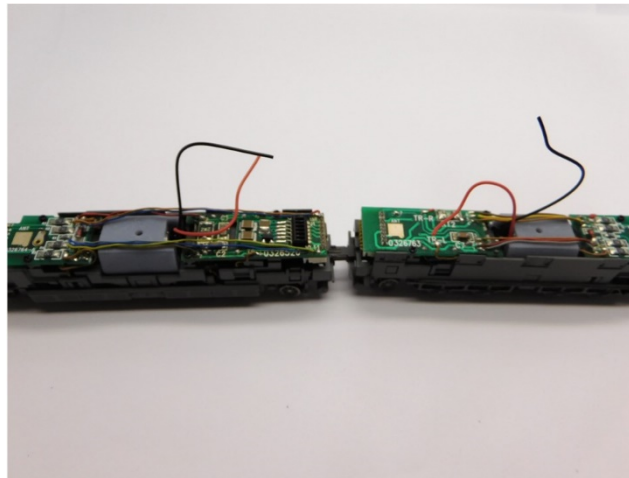
Klemmen platzieren
 Mount clamps
 Plaats de klemmen



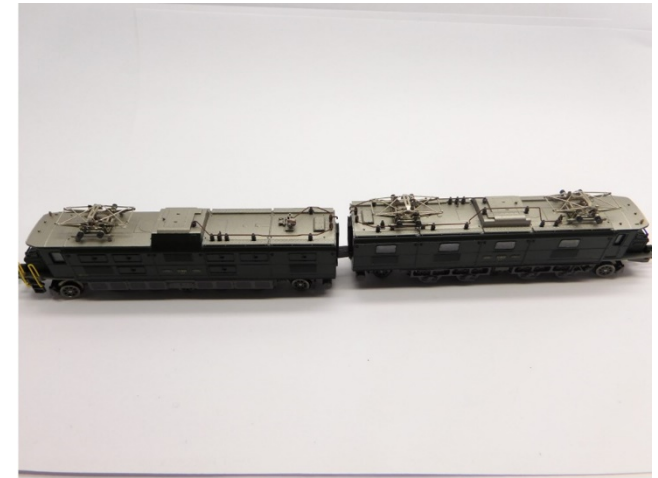
Drähte löten
 Solder the wires
 Soldeer de draden



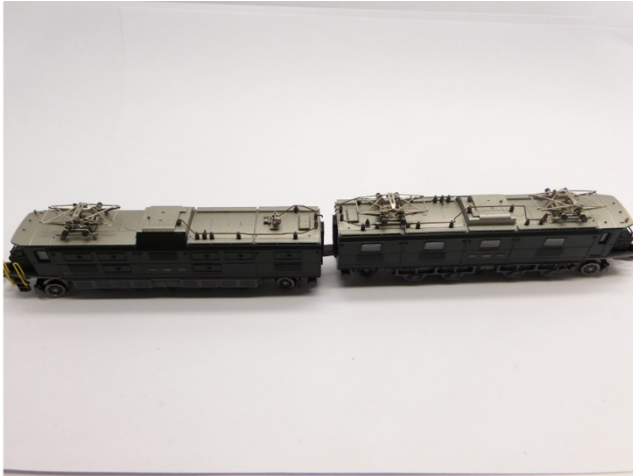
Motor platzieren
 Mount the motor
 Plaats de motor



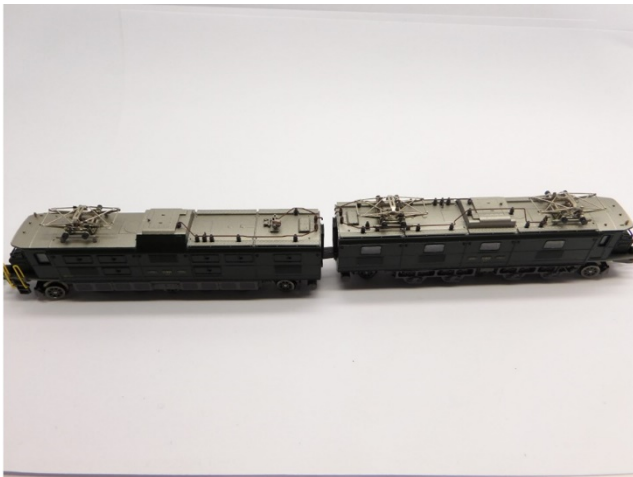
Platine platzieren
 Mount PCB
 Plaats de printplaat



Gehäuse platzieren
 Mount body
 Plaats de kap



Umbau fertig
Upgrade complete
Ombouw gereed



Micromotor NM036G