

MICROMOTOR NM006G

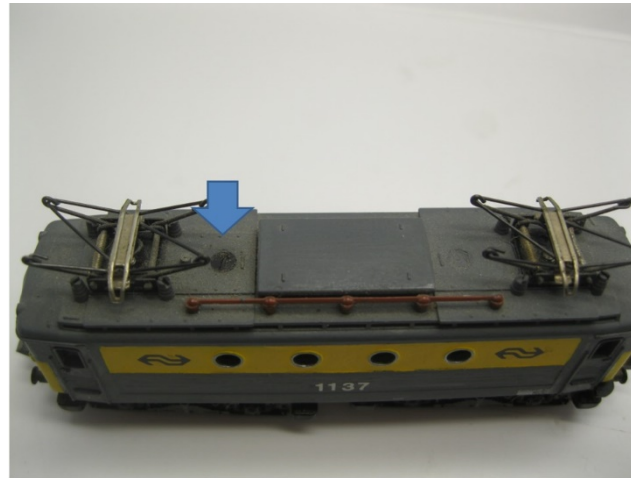


Minitrix NS 1100 / SNCF 20006
Glockenankermotor Umbau Spur N
Coreless motor upgrade N gauge
Klokankermotor ombouwsset N

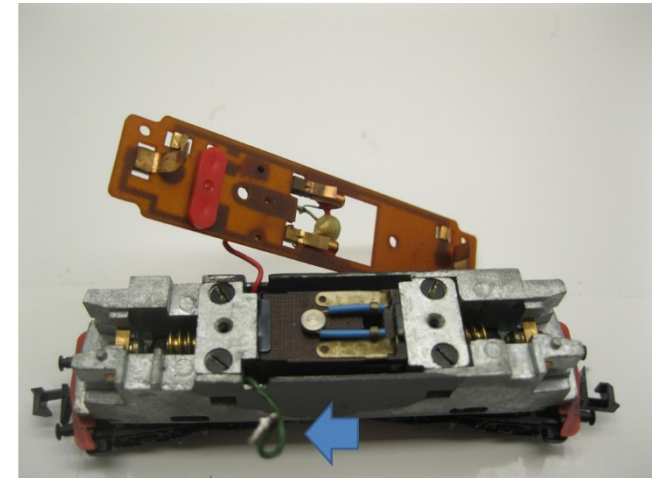
Warning! This product is not a toy and is not suitable for children under 14 years contains small parts. This product contains electronic parts so do not throw them in the household waste but hand them in separately. The EU WEEE directive applies.

Achtung! Dieses Produkt ist kein Spielzeug, nicht für Kinder unter 14 Jahren geeignet, enthält Kleinteile. Dieses Produkt enthält elektronische Teile. Werfen Sie diese daher nicht in den Müll, sondern getrennt einsammeln. Es gilt die EU-WEEE-Richtlinie.

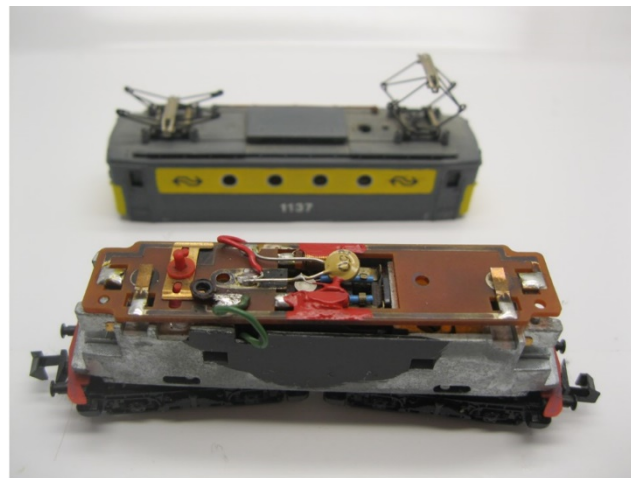
Opgelet! Dit product is geen speelgoed, niet geschikt voor kinderen onder de 14 jaar, bevat kleine onderdelen. Dit product bevat elektronische onderdelen, gooi dit daarom niet bij het huisafval maar lever dit apart in. WEEE-Regelgeving van de EU is van toepassing.



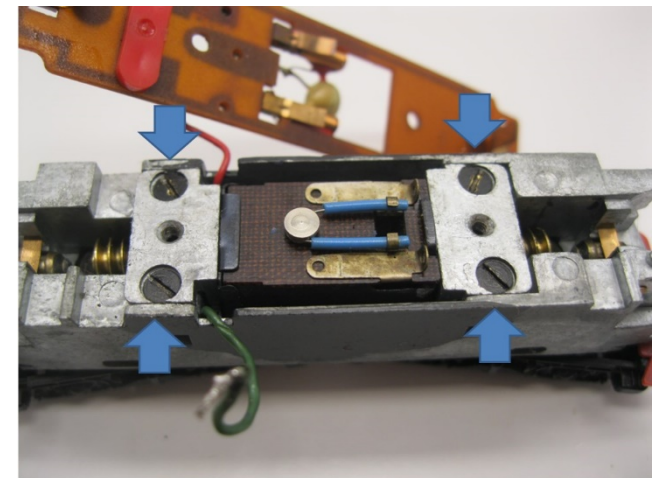
Öffnen Sie die Lokomotive
Open the locomotive
Open de locomotief



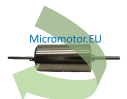
Platine entfernen
Remove PCB
Verwijder de printplaat

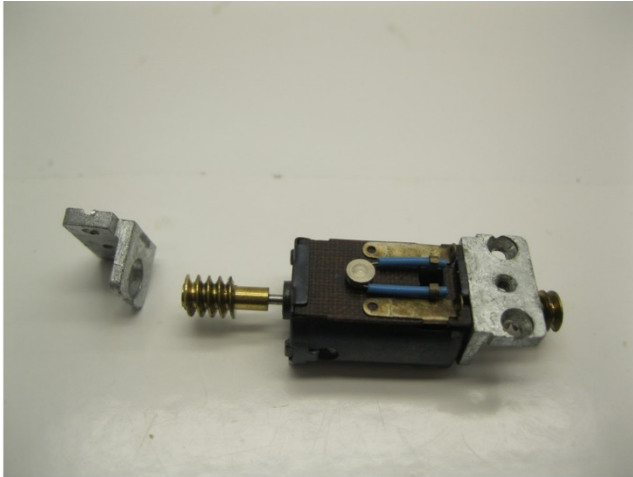


Platine entfernen
Remove PCB
Verwijder de printplaat

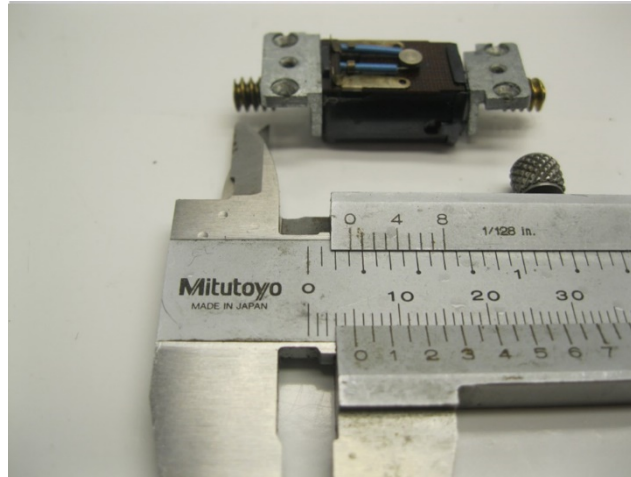


Ausbau alter Motor
Take out the old motor
Demonteer de oude motor





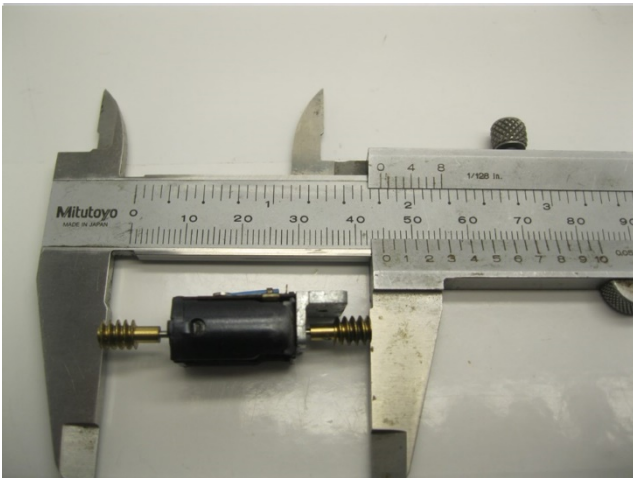
Ausbau alter Motor
Take out the old motor
Demonteer de oude motor



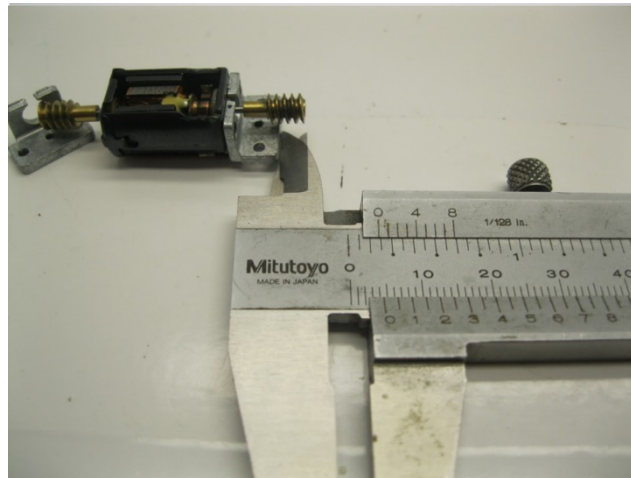
Maße prüfen
Check dimensions
Controleer de maatvoering



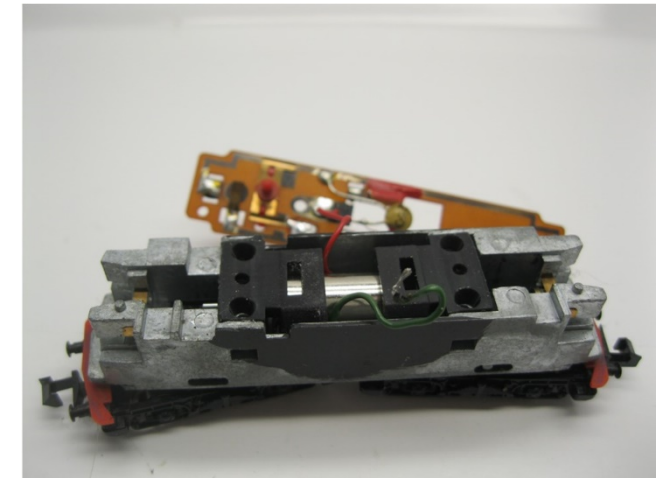
Die Teile des Bausatz
Parts of the kit
Onderdelen van de ombouwset



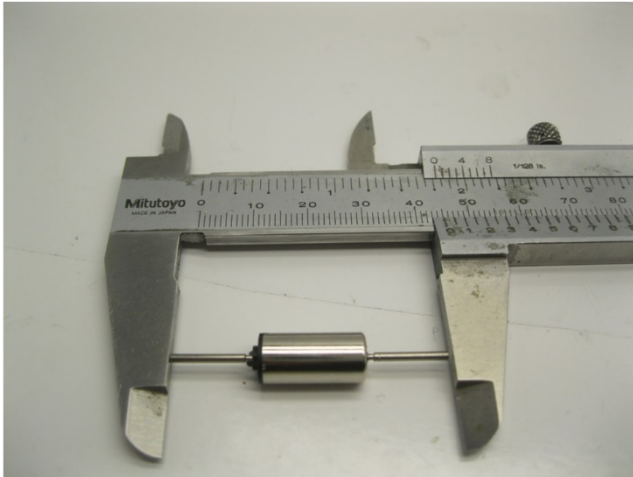
Maße prüfen
Check dimensions
Controleer de maatvoering



Maße prüfen
Check dimensions
Controleer de maatvoering



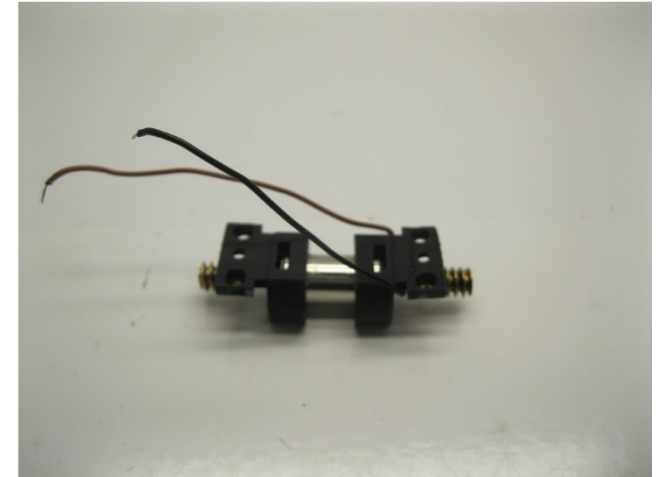
Passgenauigkeit prüfen
Test fit
Controleer de passing



Maße prüfen
Check dimensions
Controleer de maatvoering



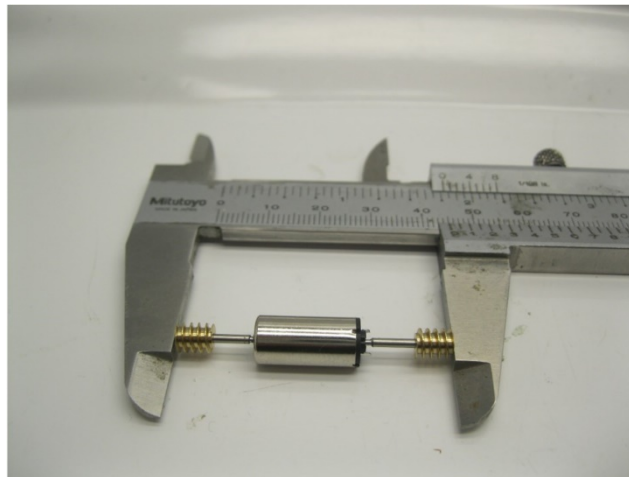
Die erste Metallteile sind verklebt
The first metal parts are glued
De eerste metaaldelen zijn verlijmd



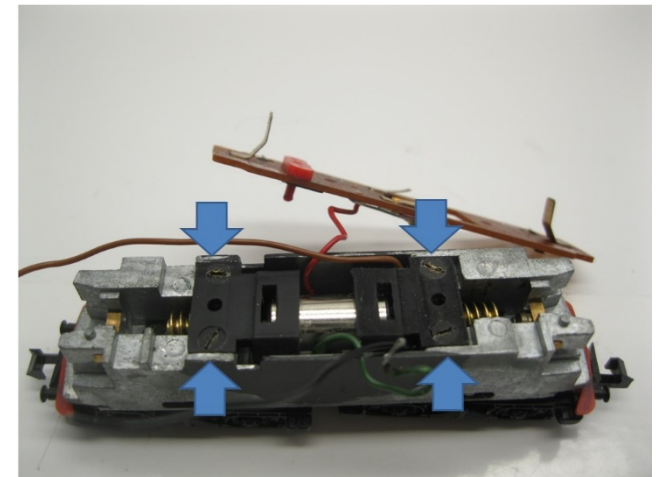
Drähte löten & platziere die Motorhalter
Solder the wires & mount the motorholders
Soldeer de draden en plaats de motorhouders



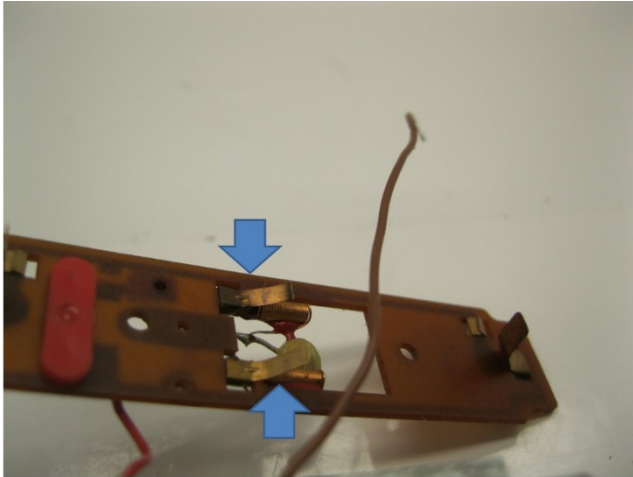
Metall Teile werden mit Loctite oder Metal Epoxy Kleber verklebt
Metal parts are glued with Loctite or metal epoxy glue
Metalen onderdelen worden gelijmd met metaallijm of epoxylijm voor metalen



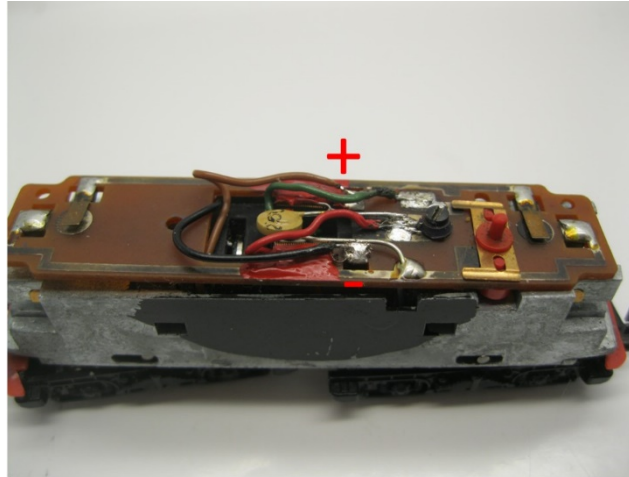
Die Metallteile sind verklebt
The metal parts are glued
De metaaldelen zijn verlijmd



Motor platzieren
Mount the motor
Plaats de motor



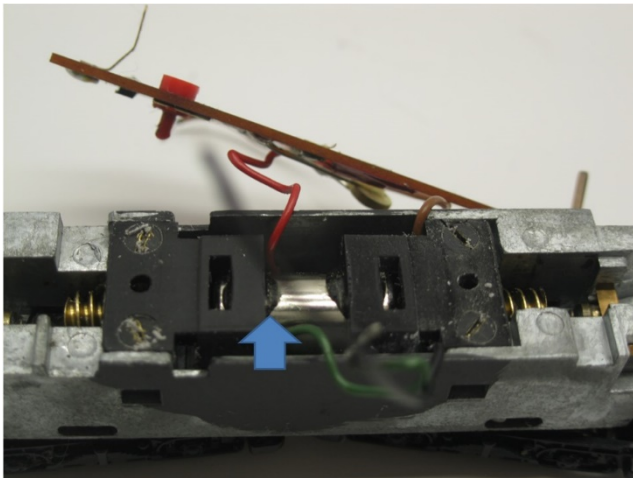
Alter Motorkontakt entfernen
Remove old motor contacts
Verwijder de oude motorcontacten



Platine plätzen und Drähte löten
Mount PCB and solder the wires
Plaats de printplaat en stoldeer de draden



Umbau fertig
Upgrade complete
Ombouw gereed



Der Motor wird mit Epoxidkleber oder Sekundenkleber in den Motorhalter eingeklebt
The motor is glued into the motor holder with epoxy glue or super glue
De motor wordt verlijmd in de motorhouder met secondelijm of epoxy lijm



Gehäuse platzieren
Mount body
Plaats de kap



Micromotor NM006G