

MICROMOTOR HLI020C



Liliput BR 202, DE 2500
Glockenankermotor Umbau Spur H0
Coreless motor upgrade H0 gauge
Klokankermotor ombouwset H0

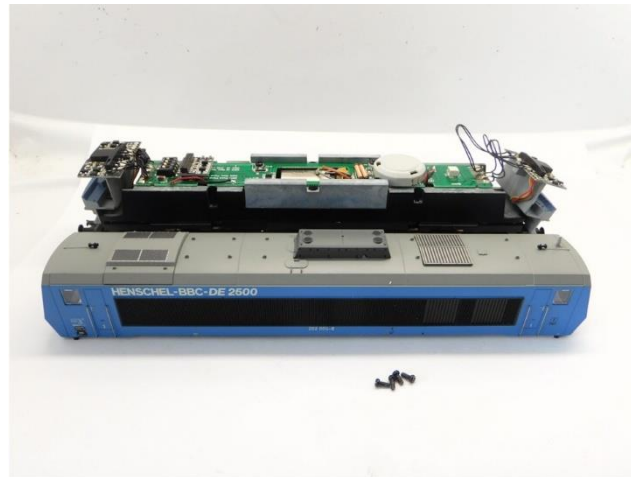
Warning! This product is not a toy and is not suitable for children under 14 years contains small parts. This product contains electronic parts so do not throw them in the household waste but hand them in separately. The EU WEEE directive applies.

Achtung! Dieses Produkt ist kein Spielzeug, nicht für Kinder unter 14 Jahren geeignet, enthält Kleinteile. Dieses Produkt enthält elektronische Teile. Werfen Sie diese daher nicht in den Müll, sondern getrennt einsammeln. Es gilt die EU-WEEE-Richtlinie.

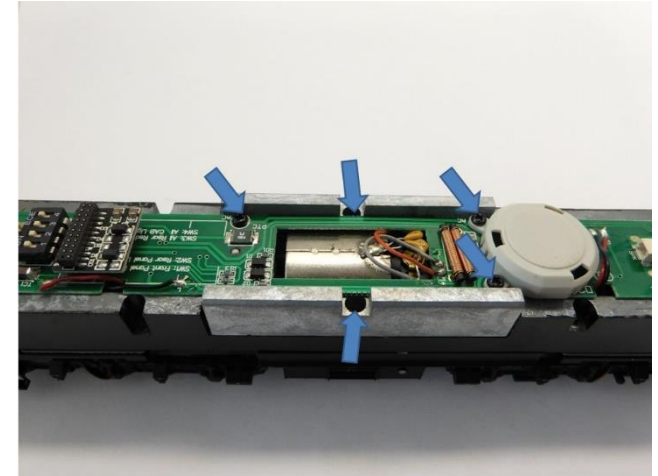
Opgelet! Dit product is geen speelgoed, niet geschikt voor kinderen onder de 14 jaar, bevat kleine onderdelen. Dit product bevat elektronische onderdelen, gooi dit daarom niet bij het huisafval maar lever dit apart in. WEEE-Regelgeving van de EU is van toepassing.



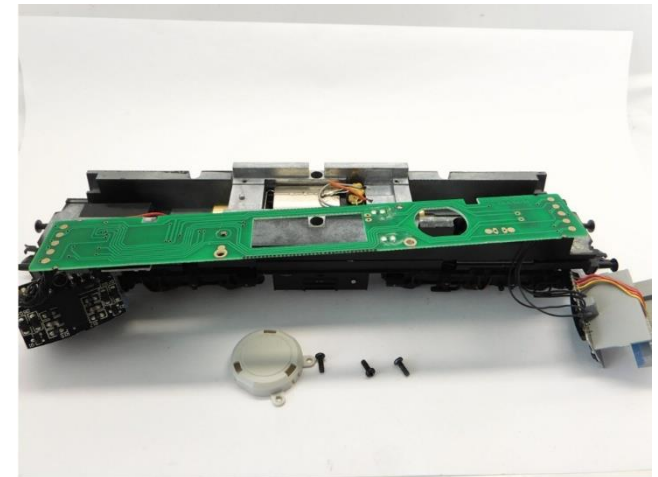
Gehäuse entfernen
Remove housing
Verwijder de kap



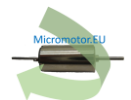
Gehäuse entfernen
Remove housing
Verwijder de kap

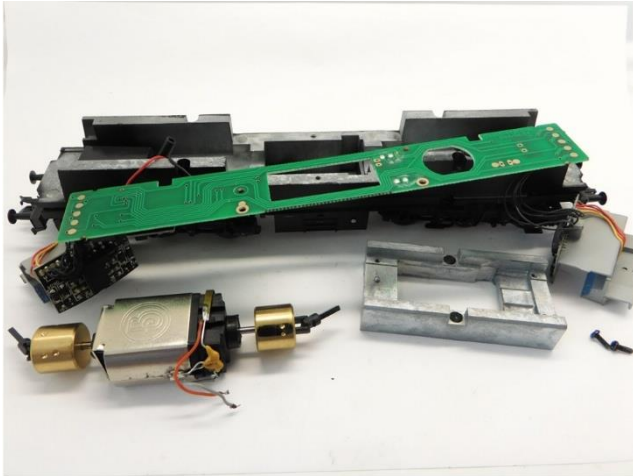


Ausbau alter Motor
Take out the old motor
Demonteer de oude motor

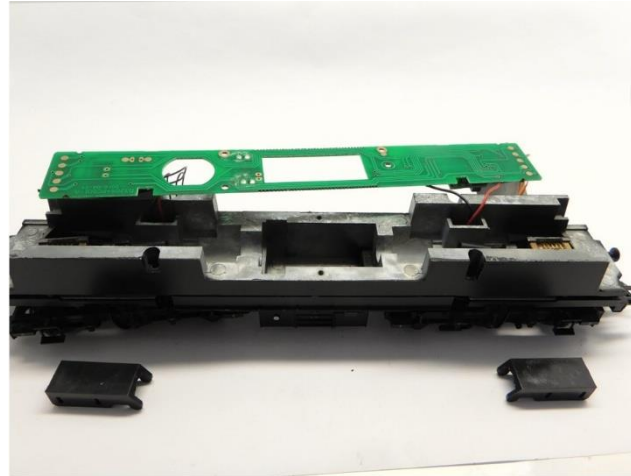


Ausbau alter Motor
Take out the old motor
Demonteer de oude motor

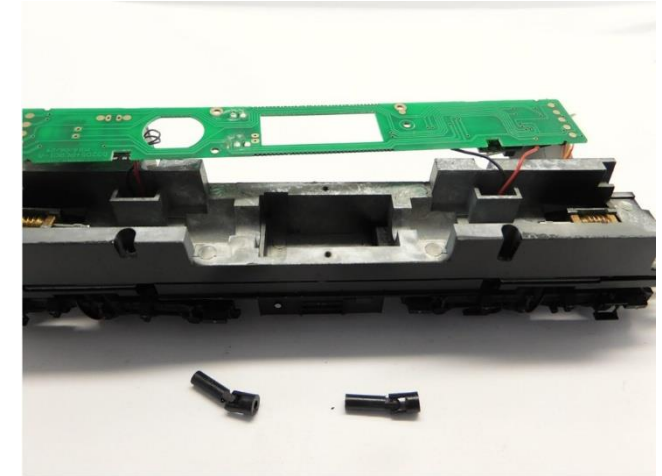




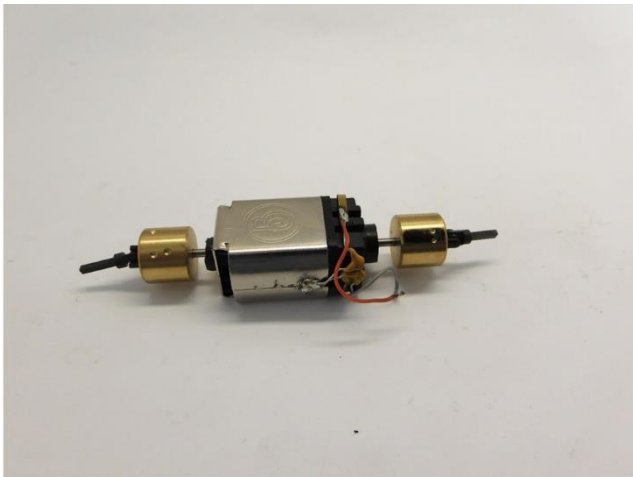
Ausbau alter Motor
Take out the old motor
Demonteer de oude motor



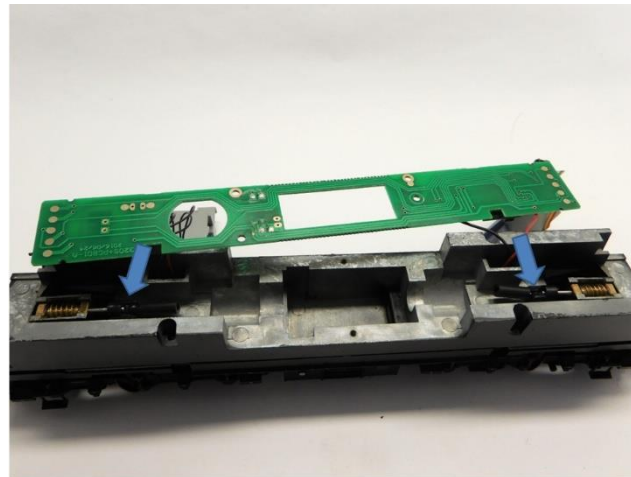
Teile entfernen
Remove parts
Verwijder de onderdelen



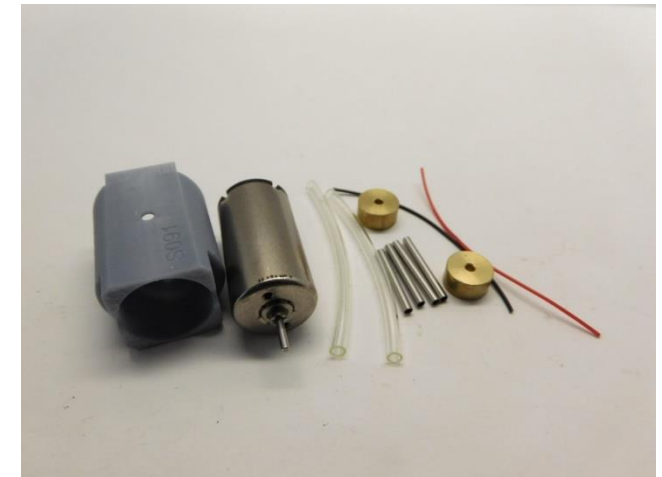
Teile entfernen
Remove parts
Verwijder de onderdelen



Ausbau alter Motor
Take out the old motor
Demonteer de oude motor



Teile entfernen
Remove parts
Verwijder de onderdelen



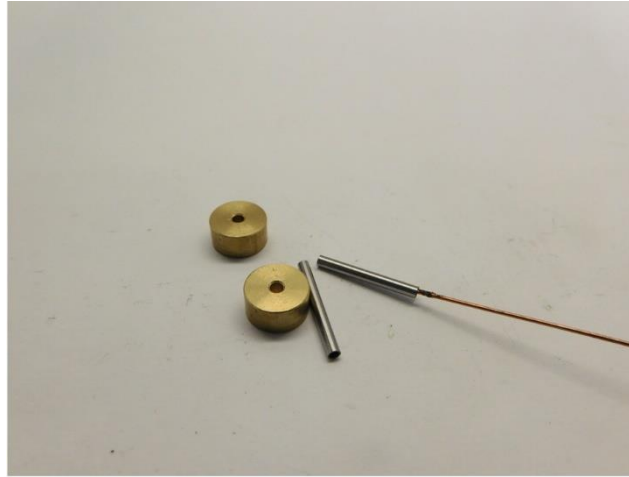
Die Teile des Bausatzes
Parts of the kit
Onderdelen van de ombouwsset



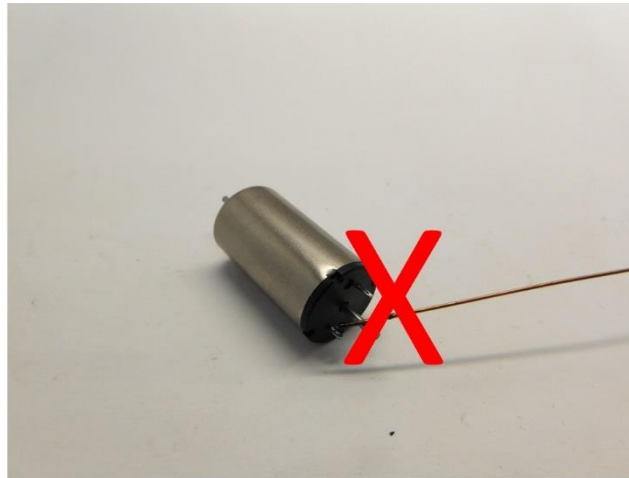
Metall Teile werden mit Loctite oder Metal Epoxy Kleber verklebt
 Metal parts are glued with Loctite or metal epoxy glue
 Metalen onderdelen worden gelijmd met metaallijm of epoxylijm voor metalen



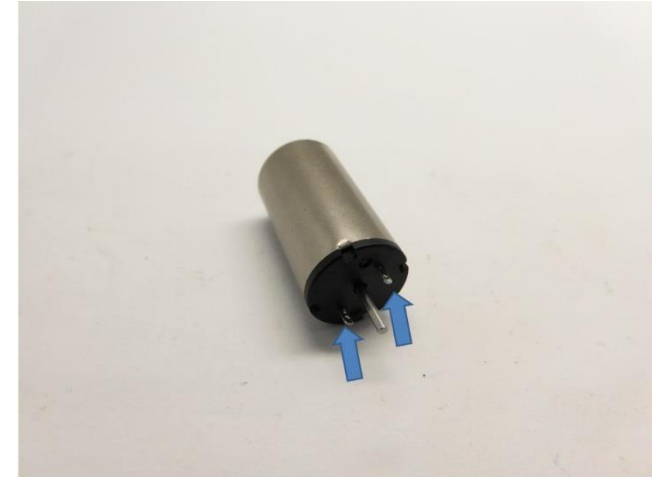
Metall Teile werden mit Loctite oder Metal Epoxy Kleber verklebt
 Metal parts are glued with Loctite or metal epoxy glue
 Metalen onderdelen worden gelijmd met metaallijm of epoxylijm voor metalen



Tragen Sie Klebstoff auf die Innenseite des Teils auf
 Apply glue on the inside of the part
 Plaats alleen lijm aan de binnenzijde van de onderdelen



Tragen Sie keinen Kleber auf die Achse auf
 Don't apply glue on the axle
 Plaats geen lijm op de as



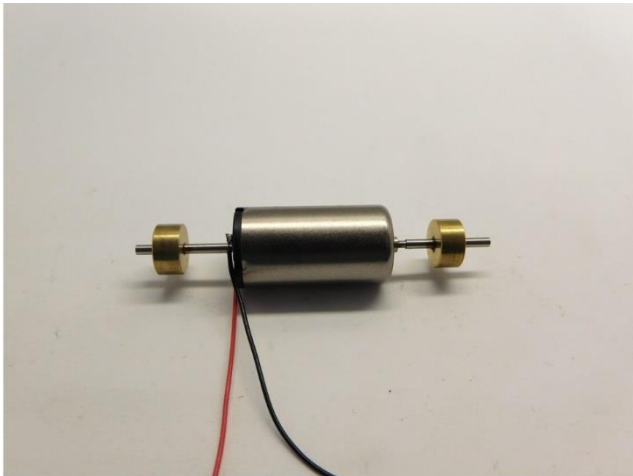
Biegen Sie die Lötlippen
 Bend the soldering lips
 Buig de soldeerlippen



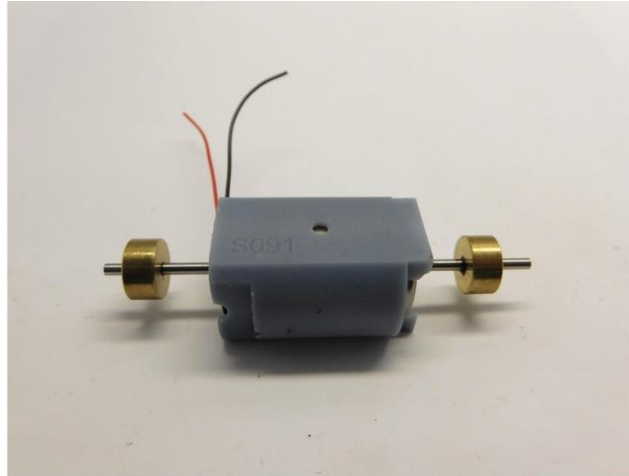
Biegen Sie die Lötlippen
 Bend the soldering lips
 Buig de soldeerlippen



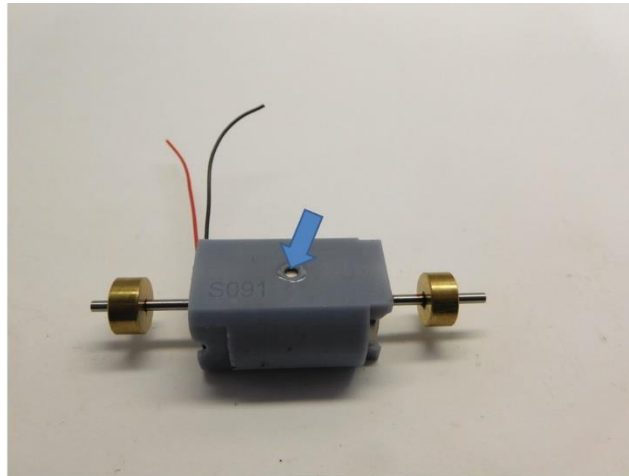
Die Metall Teile sind verklebt
The metal parts are glued
De metaaldelen zijn verlijmd



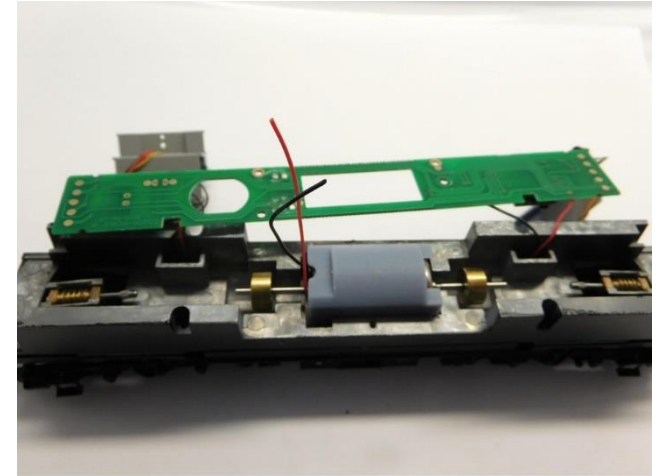
Die Drähte sind verlötet
The wires are soldered
De draden zijn gesoldeerd



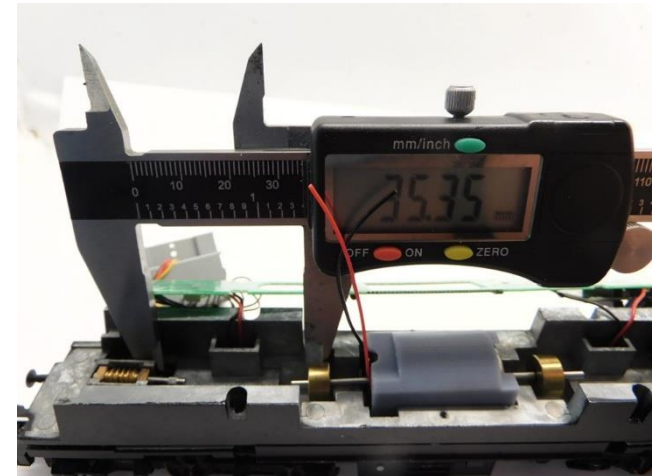
Motor im Motorhalter platzieren
Place motor in motor holder
Plaats de motor in de motor houder



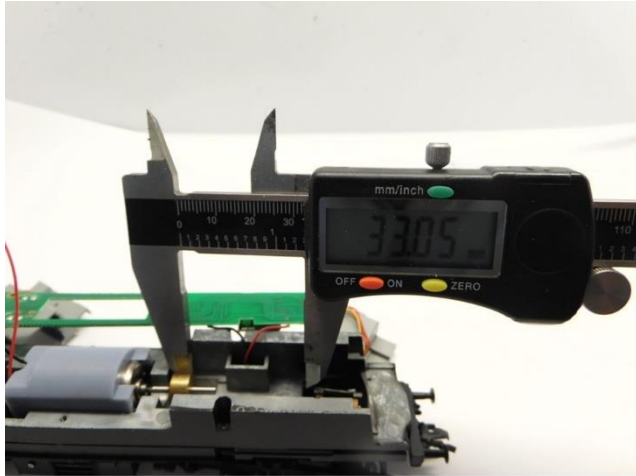
Der Motor wird mit Epoxidkleber oder Sekundenkleber in den Motorhalter eingeklebt
The motor is glued into the motor holder with epoxy glue or super glue
De motor wordt verlijmd met secondelijm of epoxy lijm



Motor prüfen
Test fit
Controleer de passing



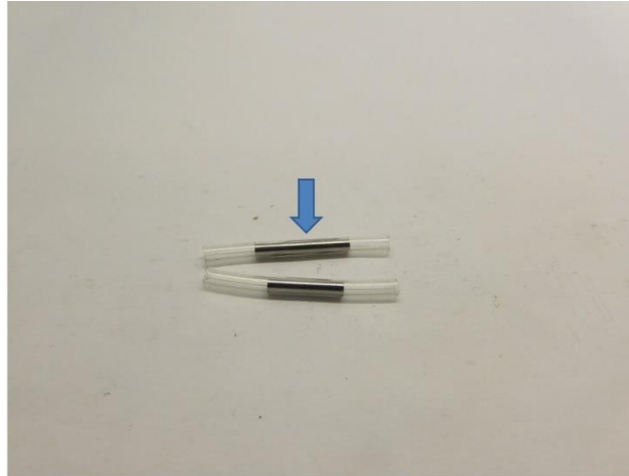
Maße prüfen
Check dimensions
Controleer de maatvoering



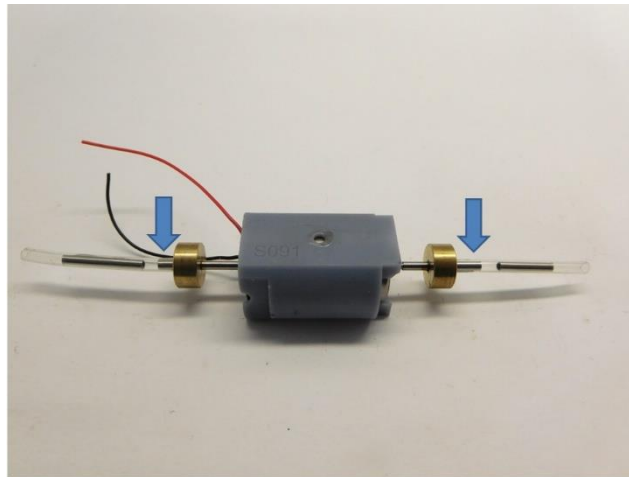
Maße prüfen
Check dimensions
Controleer de maatvoering



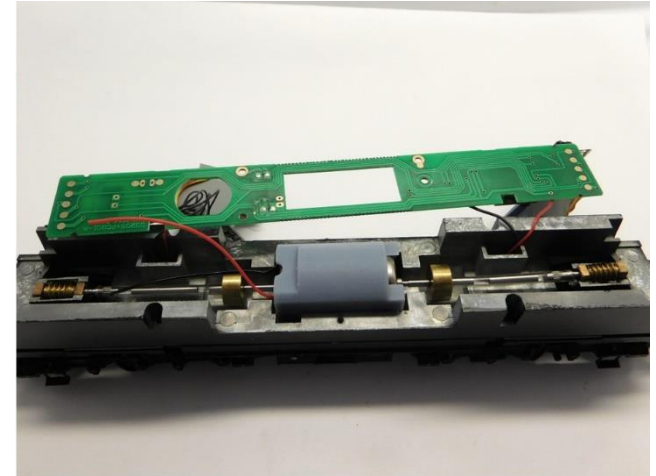
Kürzen Sie die Schlauchkupplungen
Shorten the hose couplings
Kort de slangkoppelingen in



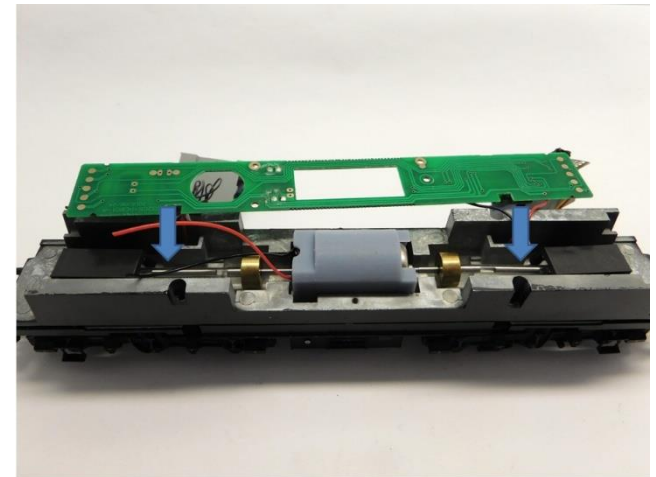
Schlauchkupplung vorbereiten
Prepare the hose coupling
Bereid de slangkoppelingen voor



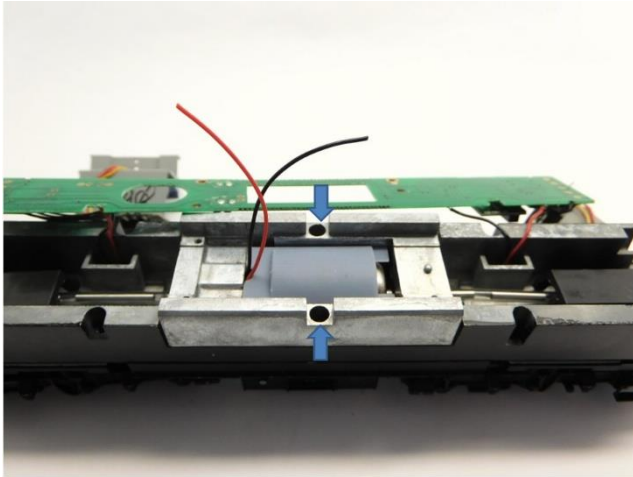
Schlauchkupplung kleben
Glue the hose coupling
Verlijm de slangkoppelingen



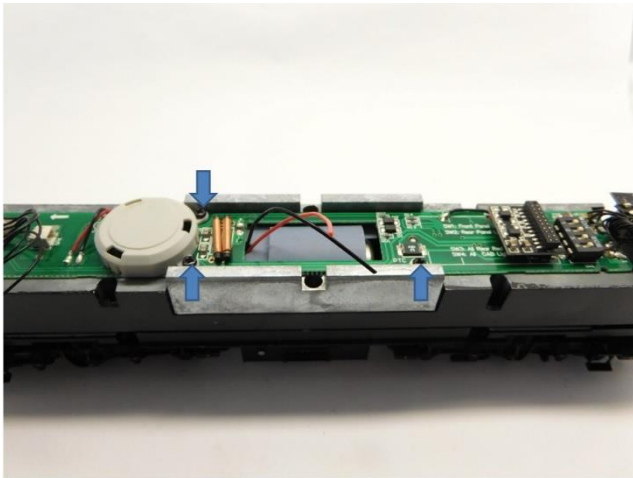
Motor platzieren
Place motor
Plaats de motor



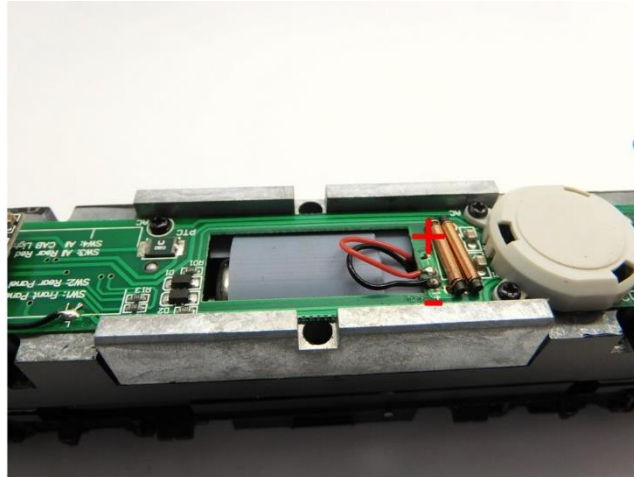
Schlauchkupplung kleben
Glue the hose coupling
Verlijm de slangkoppelingen



Rahmen platzieren
Place the frame
Monteer het frame



Platine platzieren
Place the PCB
Plaats de printplaat



Drähte löten
Solder the wires
Soldeer de draden



Gehäuse platzieren
Mount body
Plaats de kap



Umbau fertig
Upgrade complete
Ombouw gereed



Micromotor HLI020C